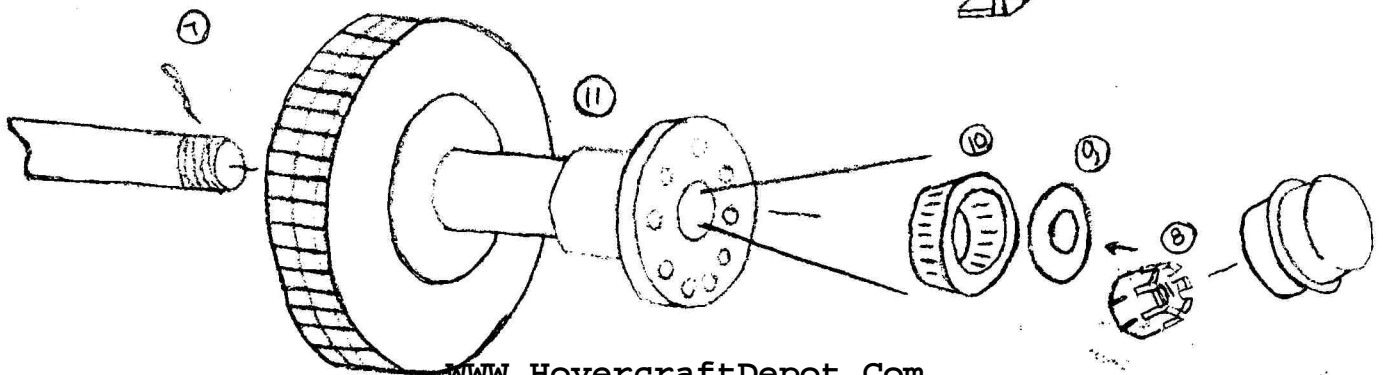
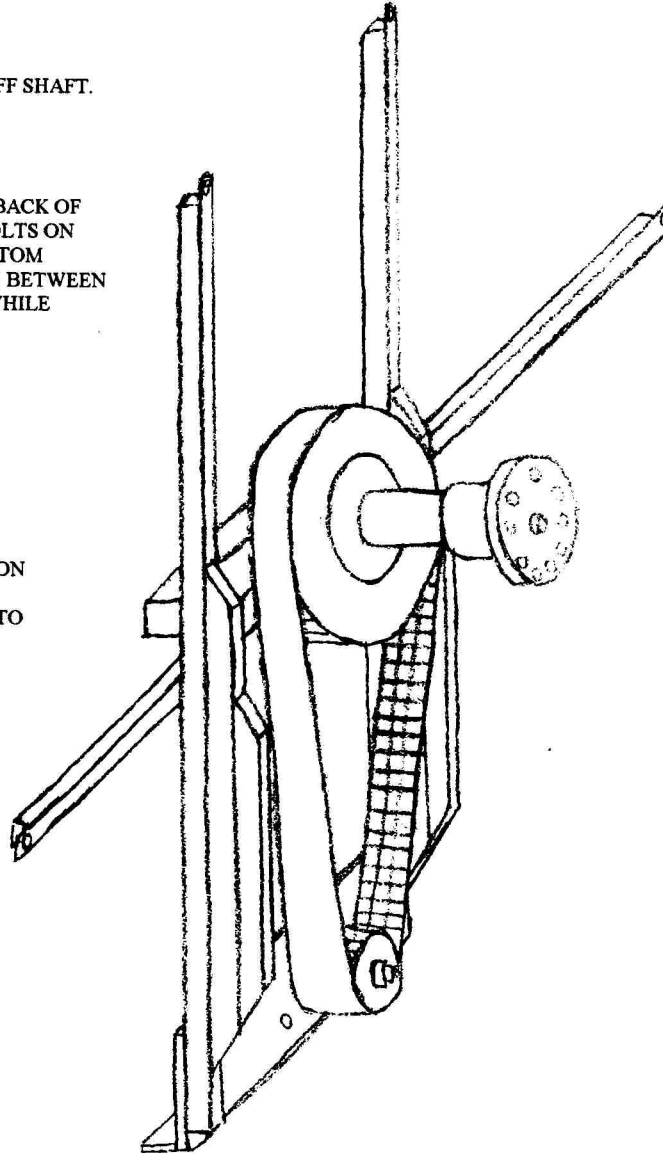


## REPLACING BELT

1. REMOVE FAN GUARD.
2. REMOVE ENGINE COVER.
3. REMOVE GAS TANK.
4. REMOVE 6 ENGINE MOUNT BOLTS.
5. LAY ENGINE TOWARDS FRONT OF CRAFT ( CAREFUL NOT TO DAMAGE LOWER ENGINE MOUNTS).
6. REMOVE DUST COVE (HUB CAP) ON REAR OF FAN HUB.
7. REMOVE COTTON PIN.
8. REMOVE CASTLE NUT.
9. REMOVE BEARING WASHER.
10. REMOVE TAPER BEARING.
11. REMOVE BELT GUARD.
12. HOLD BELT WITH THUMB WHILE PULLING FAN HUB DIRECTLY OFF SHAFT.
13. REMOVE 4-5/16 BOLTS AND TOP PULLEY.
14. INSTALL NEW TOP PULLEY ( LIP TOWARDS FRONT OF CRAFT).
16. REMOVE LOWER PULLEY.
17. INSTALL NEW LOWER PULLEY AND BELT.
18. ADJUST TENSION ON BELT BY LOOSENING THE 4 BOLTS ON THE BACK OF THE MOTOR. LOOSEN THE 2 JAM NUTS ON EACH OF THE TWO BOLTS ON THE BOTTOM OF THE ENGINE. TIGHTEN THE BOLTS ON THE BOTTOM OF THE ENGINE UNTIL BELT IS TIGHT. PUSHING ON THE BELT IN BETWEEN THE PULLEYS THE BELTS SHOULD MOVE NO MORE THAN 1/4" WHILE EXERTING 15 TO 20 LBS OF PRESSURE.

**CAUTION: DO NOT OVERTIGHTEN BELT, THIS WILL DECREASE THE LIFE OF THE ENGINE BEARINGS!**

19. PLACE FAN HUB BACK ON SHAFT.
20. LINE UP TEETH ON BELT WITH TEETH ON UPPER PULLEY.
21. PUSH FAN HUB BACK IN PLACE.
22. REPLACE TAPER BEARINGS ( RE-GREASE IF NECESSARY ).
23. REPLACE BEARING WASHER.
24. REPLACE CASTLE NUT.
25. TIGHTEN CASTLE NUT TO SEAT BEARING.
26. LOOSEN CASTLE NUT SO BLADES CAN SPIN ABOUT 1/2 REVOLUTION WHEN TURNED BY HAND.  
(DO NOT OVER TIGHTEN NUT. TAPER BEARINGS ARE DESIGNED TO OPERATE WITH NO PRELOAD OR BACKLASH.)
27. REPLACE COTTON PIN.
28. REPLACE BELT GUARD.
29. REPLACE ENGINE MOUNT BOLTS.
30. REPLACE GAS TANK.
31. REPLACE ENGINE COVER.
32. REPLACE FAN GUARD.
33. START AND REV ENGINE TO CHECK BELT ALIGNMENT AGAIN.



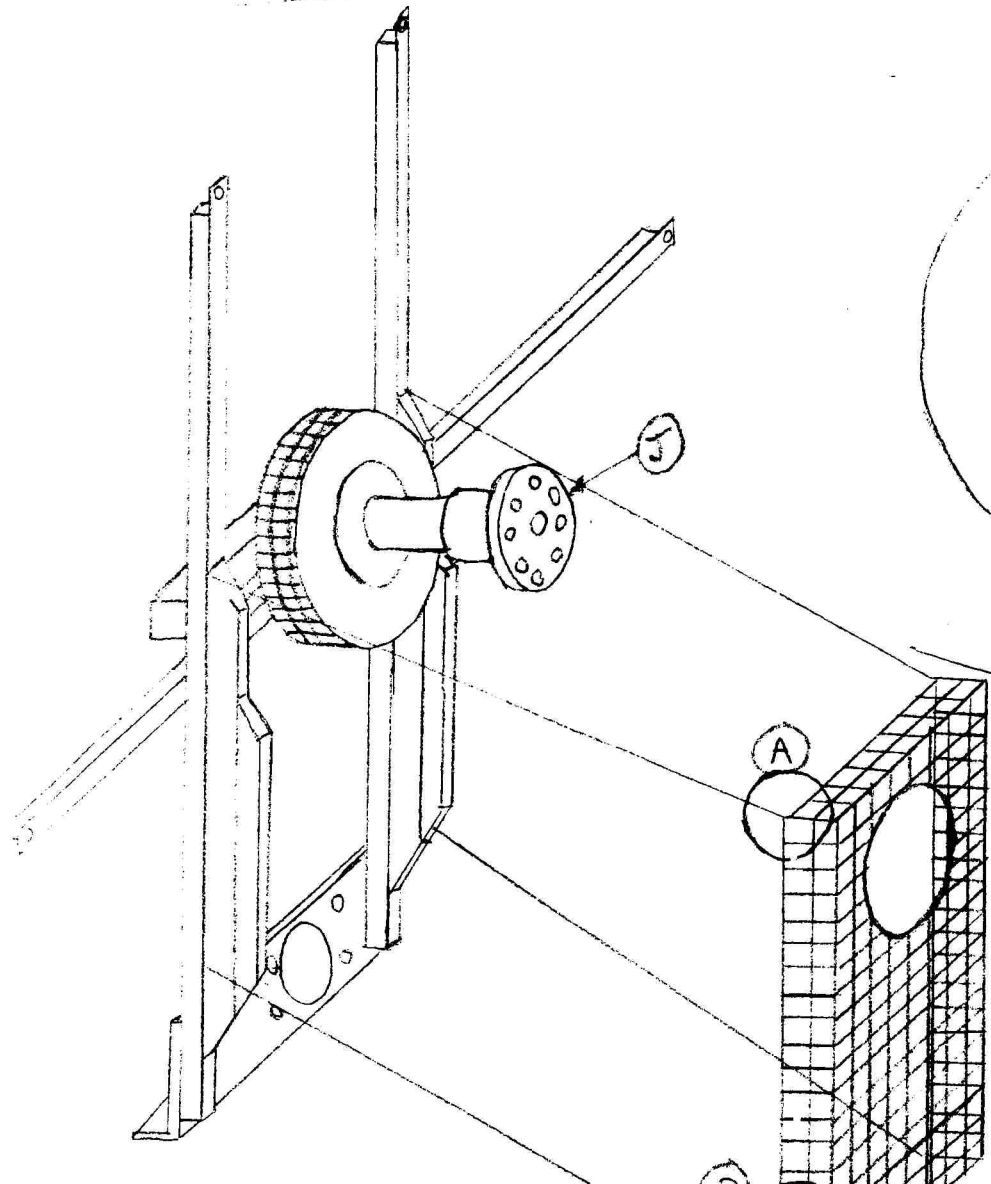
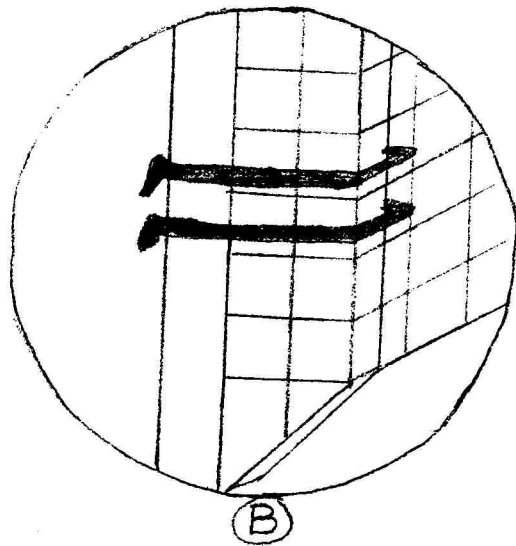
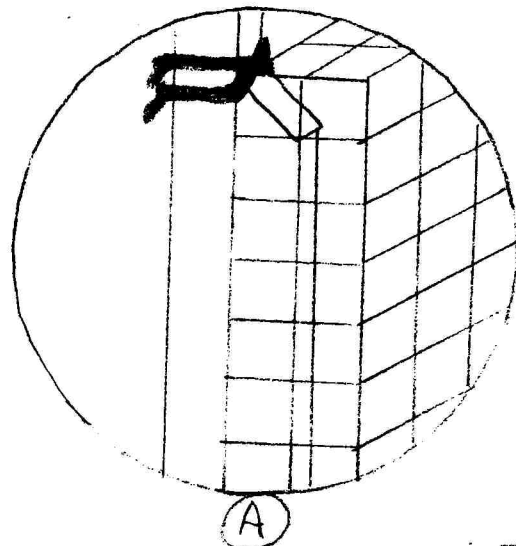


Hovercraft Depot, LLC  
 202 Hemi Lane  
 Laurie, MO 65037  
 WWW.HOVERCRAFTDEPOT.COM

WWW.HOVERCRAFTDEPOT.COM

## BELT GUARD INSTALLATION INSTRUCTIONS

1. Remove fan guard, engine cover, & gas tank.
2. Remove four top engine frame bolts (I).
3. Tilt frame forwards. CAUTION- DO NOT OVER STRESS TWO REMAINING BOTTOM BOLTS BECAUSE ENGINE MOUNTS WILL BREAK.
4. Remove nine inner nuts, washers, & fan assembly at (J).
5. Press guard into position indicated.
6. Strap two ties at each corner as indicated, snip excess tie. Note the X-Pattern on the top two corners.
7. Replace nine inner nuts, washers, & fan assembly at (J).
8. Tilt frame back into normal position.
9. Replace four top engine frame bolts (I).
10. Replace engine cover, fan guard & clips, & gas tank.



# NEW PRODUCT!

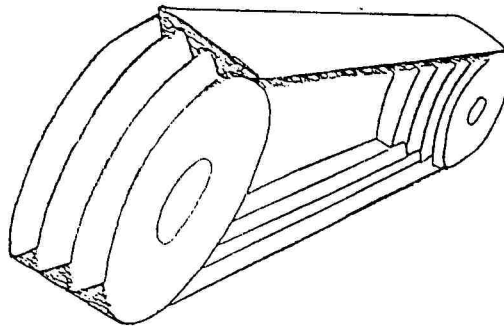
## V-BELT DRIVE SYSTEM FOR SCAT 1's

### WORKS SO GOOD, IT'S **GUARANTEED**

Finally there is a drive belt that is reliable! No more problems with breaking belts on your hovercraft. Convert your pulley and belt to the new

### **V- BELT KIT!!!**

The kit is easy to install and replaces current drive assembly. Comes with a  
**ONE YEAR LIMITED WARRANTY** on belt.



Kit includes two pulleys, belt, instructions and attachments

### CONTACT

**561-274-2247 TECH. SUPPORT**

**Hovercraft Depot, LLC**  
202 Miami Lane  
Laurie, MD 08037  
[WWW.HOVERCRAFTDEPOT.COM](http://WWW.HOVERCRAFTDEPOT.COM)

[WWW.HovercraftDepot.Com](http://WWW.HovercraftDepot.Com)

REVISED 9/2007  
561-274-2247  
V-Belt Kit info