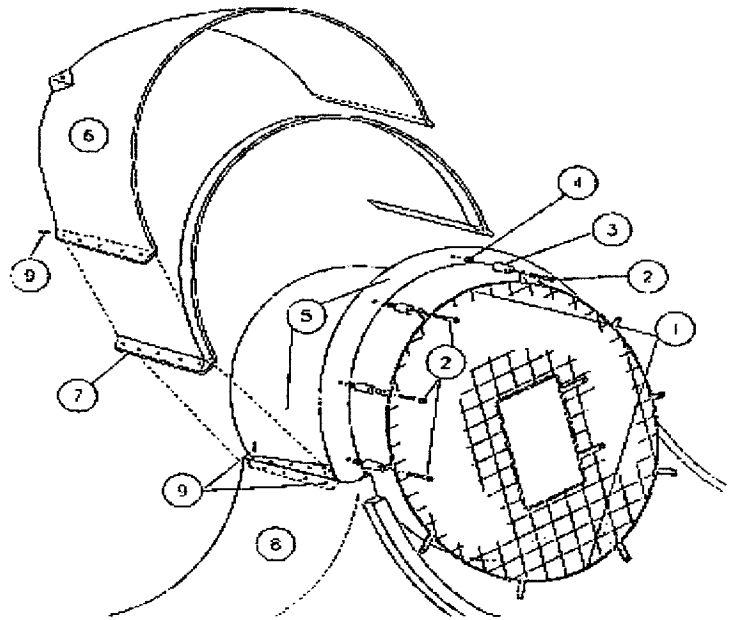


SCAT 2 Hovercraft Parts

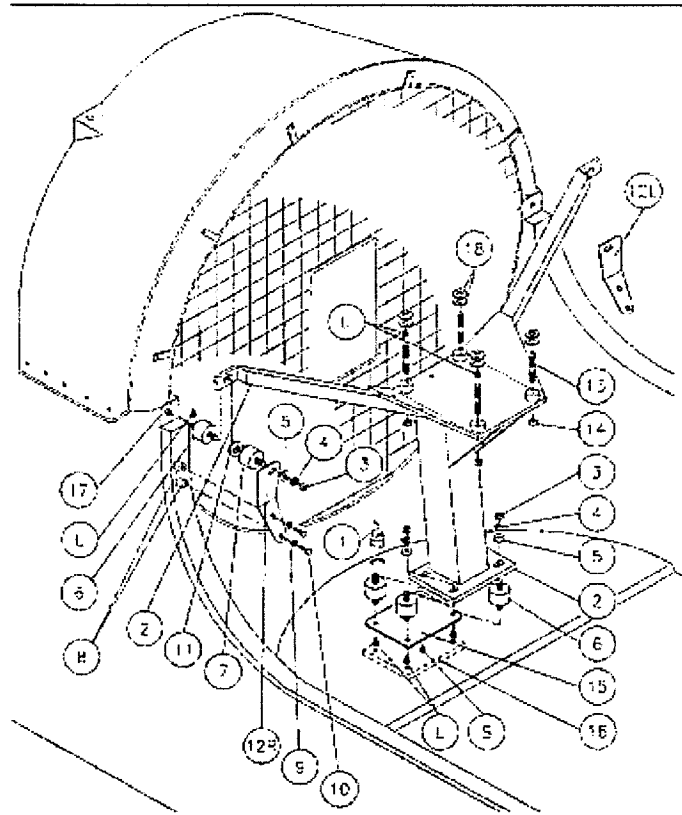
FAN GUARD ASSEMBLY

No.	Part No.	Description
1	3019	Fan Guard Assembly
2	7200	Screw, PHPS 10/32 x 1 1/4
2	7200-2	Screw, PHPS 10/32 x 2.5"
3	3029	Fan Guard Spacer
4	3031	Wellnut 10-SL
5	3003	Duct, Cowling
6	3005	Duct, Cowling Cover
	3004	Duct, Cowling Cover Assembly
7	3006	P- Molding (Per Foot)
9	7710	Rivet, 3/16 x 3/8 GR



ENGINE MOUNTING FRAME

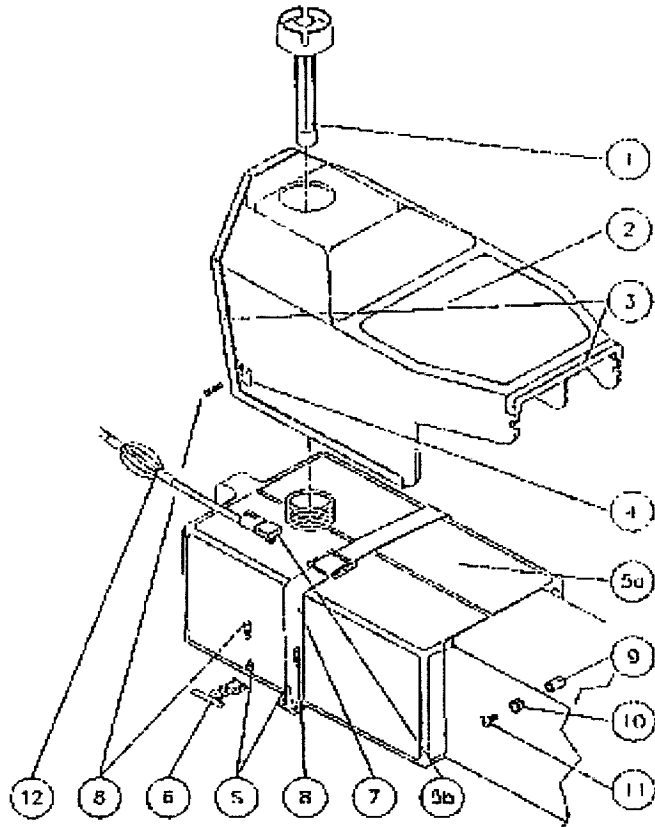
No.	Part No.	Description
1	1015	Drain Plug
2	2001	Engine Frame (Motor Mount)
3	7400	Nut, Hex Head 3/8 -16
4	7500	Lock Washer, 3/8" SS
5	7501	Flat Washer, 3/8" x 7/8" SS
6	2002-1	Motor Mount Male/Male (3/8")
6	2002-2	Motor Mount Male/Male (5/16")
7	2003-1	Motor Mount Male/Female (3/8")
7	2003-2	Motor Mount Male/Female (5/16")
8	7401	Nutsert, Brass 1/4-20
9	7502	Lock Washer, 1/4" SS
10	7201	Cap Screw, 1/4-20 x 1 HH, SS
11	7503	Flat Washer, 3/8" ID x 1" OD
12	2005	Bracket, Engine Frame (R/L)
13	7506	Stud, M10 X 1.5, 55mm SS
14	7404	Lock Nut, M10 X 1.5 SS
18	7507	Flat Washer M10.5 SS



SCAT 2 Hovercraft Parts

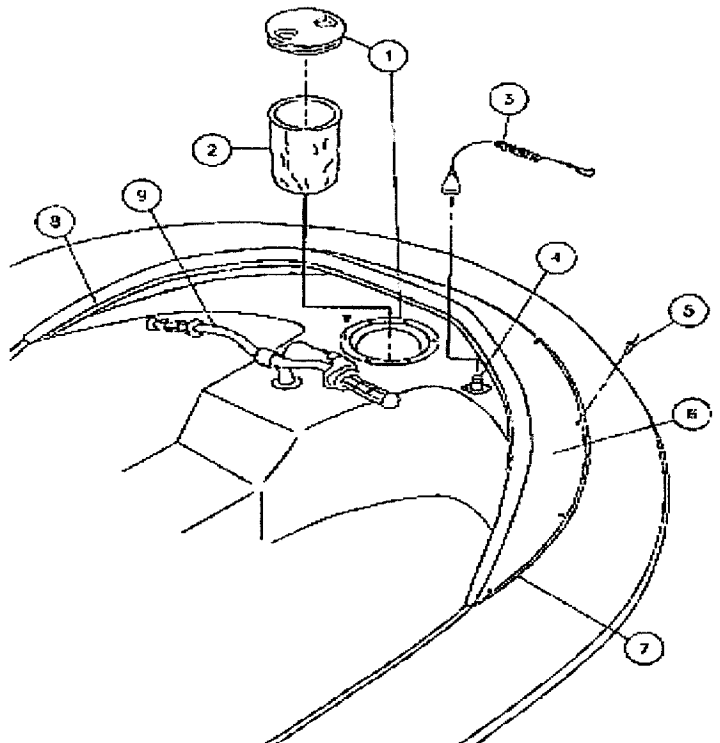
FUEL TANK & HARDWARE COMPONENTS

No.	Part No.	Description
1	7007	Fuel tank cap with gauge 6 & 12 Ga
2	1002	AC Rear Seat Assembly
3	6005	Edge Molding (Per Foot)
4	7004	Metal clip (Replaces Guard Saddle Clips)
5	7000-3	Fuel Tank Assembly(#1, 5a & 5b) 3 Ga
5	7000-6	Fuel Tank Assembly(#1, 5a & 5b) 6 Ga
5	7000-12	Fuel Tank Assembly(#1, 5a & 5b) 12 Ga
5a	6999-3	Fuel Tank with Cap 3 Gallon
5a	6999-6	Fuel Tank with Cap 6 Gallon
5a	6999-12	Fuel Tank with Cap 12 Gallon
5b	7005	Fitting Fuel Tank Mount
6	7004B	Metal clip With T Handle
7	7002	Gas Strap Assembly
8	7707	Rivet 1/8 x 1/2
9	3032	Wellnut, 10-32
10	7600	Spacer & Flat Washer 1/4" SS
11	7200	Screw, 10-32 x 1/14" PHPS
11	7200-2	Screw, 10-32 x 1/14" PHPS
12	7001	Fuel Line Assembly
	7003	Battery Box with Strap
	7003-1	Strap For Battery Box
	7010	Fuel Tank Pick up

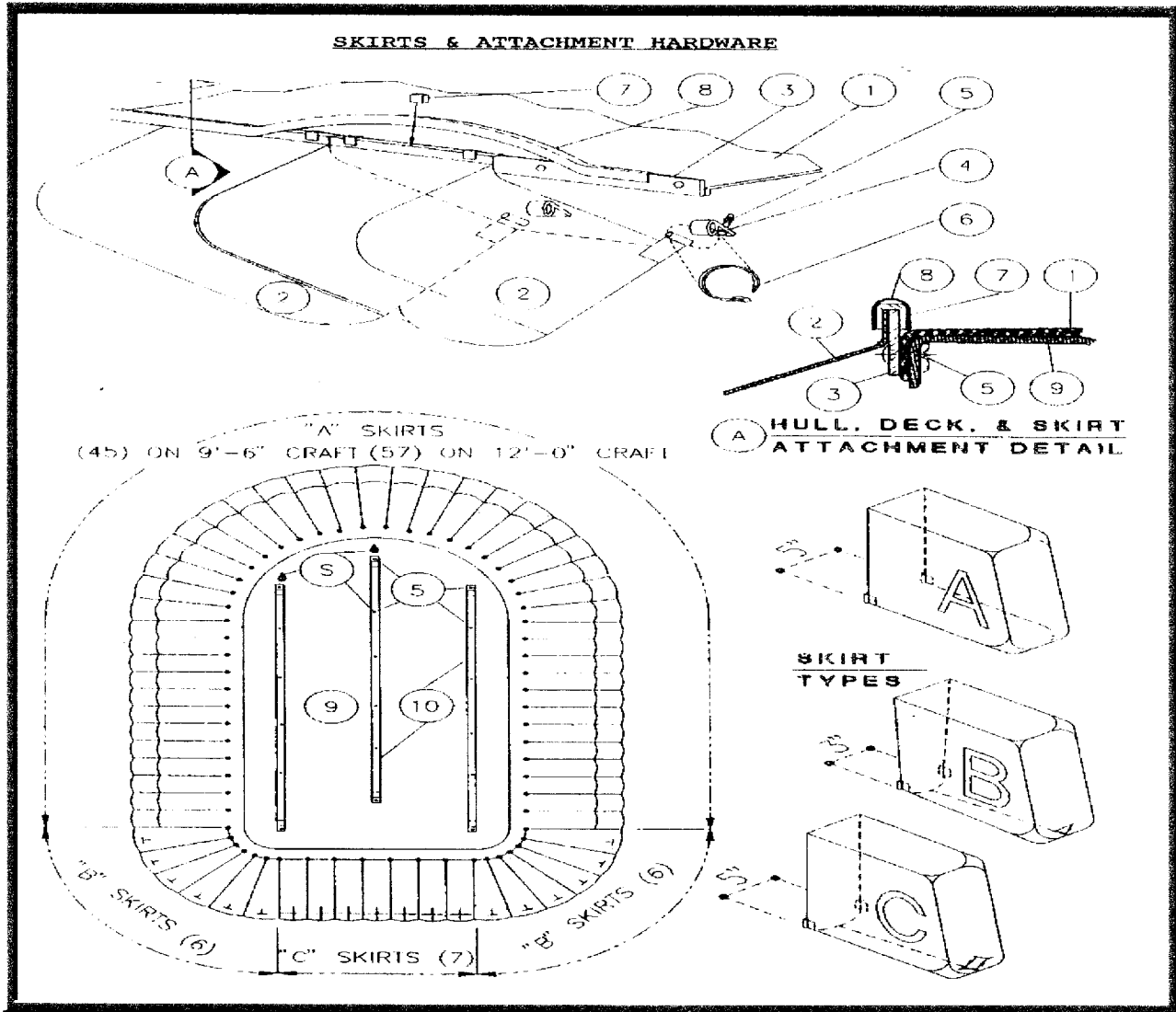


CONSOLE DECK COMPONENTS

No.	Part No.	Description
1	1006	Deck Plate 4"
1	1007	Deck Plate 6"
3	8002	Tether
4	8001	Universal Kill Switch (Single Ignition)
5	7710	Rivet 3/16" x 3/8"
6	7009	Windscreen Assembly (Call)
7	3006	"P" Molding (Per Foot)
8	6005	Edge Molding (Per Foot)
9		Handle Bars Assembly - See Steering Components



SCAT 1, 2 & 12 Hovercraft Parts



SKIRT ACCESSORIES

No.	Part No.	Description
2	6001A	"A" Skirt Segments (Front & Sides)
	6001B	"B" Skirt Segments (Rear Sides/ Corners)
	6001C	"C" Skirt Segments (Main Rear)
	6001	Full Skirt Set (SCAT 1 & 2) 9'5" (64)
	6001-1	Full Skirt Set (SCAT 12) 12' (76)
3	6002	Skirt Trim (Drilled) (Per Foot)
4	6006P	Plastic "P" Clips
5	7709	TLR Rivet
6	6003	Skirt Ties (Cable Ties) (Paks of 100)
7	6004	Skirt Clips
8	6005	Edge Molding (Per Foot)
	6008A	Aluminum Skids (SCAT 1) (2)
	6008-1	Aluminum Skid (SCAT 1) (1 Skid)
	6008	Aluminum Skids (SCAT 2) (W/ 3 Rivets)
	6208	Aluminum Skid (SCAT 2) (1 Skid)
	6208A	Aluminum Skids (SCAT 12) (W/ 3 Rivets)

BELT INFORMATION:

Belt Drive Systems - Require Left Blade Rotation
 Direct Drive System- Require Right Blade Rotation

SKIRT SET INFORMATION:

SCATS 1 & 2 Skirt Sets Include (45-A's) (12-B's) (7 C's)
 SCATS 1 & 2 Require- (Not Included with sets) 192 Skirt Clips, 65 P-Clips, 65 Rivets, and over 100 Skirt Ties.

SCAT 12 Skirt Sets Include (57-A's) (12-B's) (7-C's)

SCAT 12 Requires- (Not Included with sets) 238 Skirt Clips, 77 P-Clips, 77 Rivets, and over 200 Skirt Ties.

SKIRT TRIM INFORMATION:

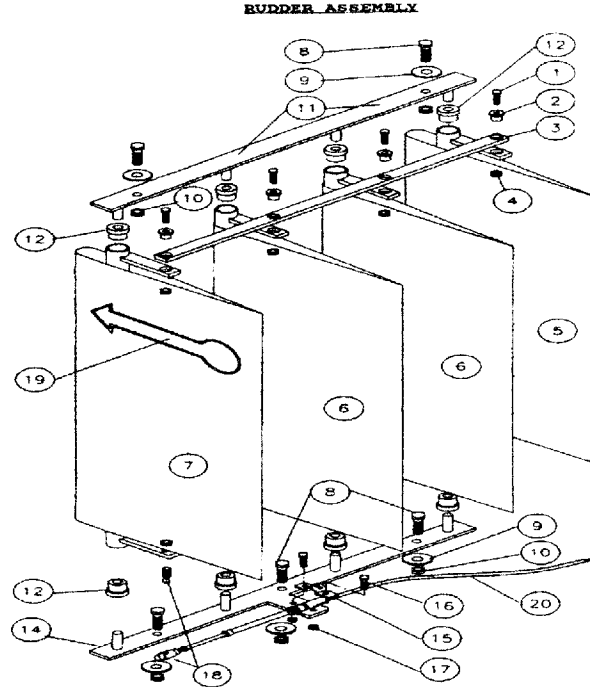
SCAT 1 & 2 Require - 27ft of Skirt Trim Drilled (for entire craft)
 SCAT 12 Requires- 33ft of Skirt Trim Drilled (for entire craft)

EDGE MOLDING INFORMATION:

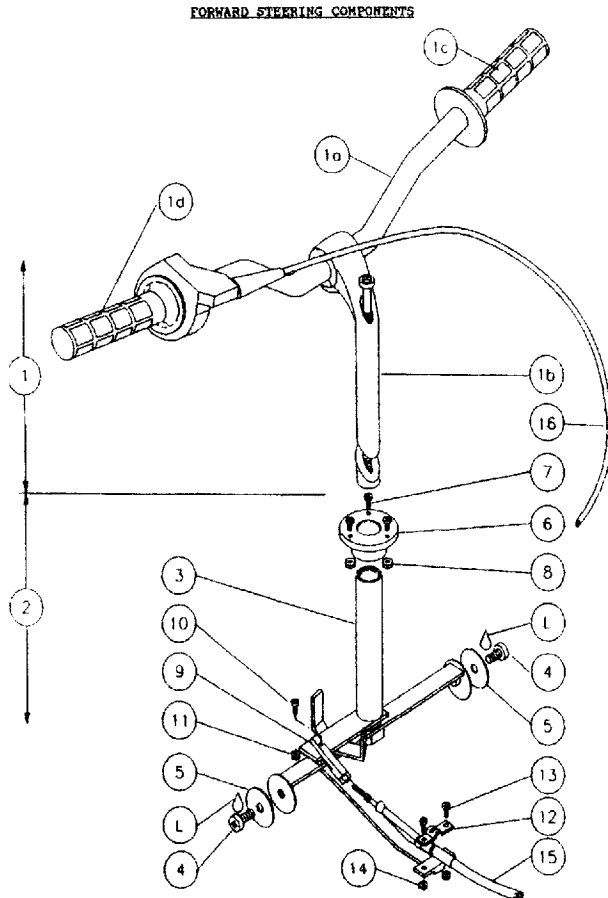
SCAT 1 & 2 Require - 27ft of Edge Molding (for entire craft)
 SCAT 1 & 2 Require - 27ft of Edge Molding (for entire craft)

SCAT 1, 2 & 12 Hovercraft Parts

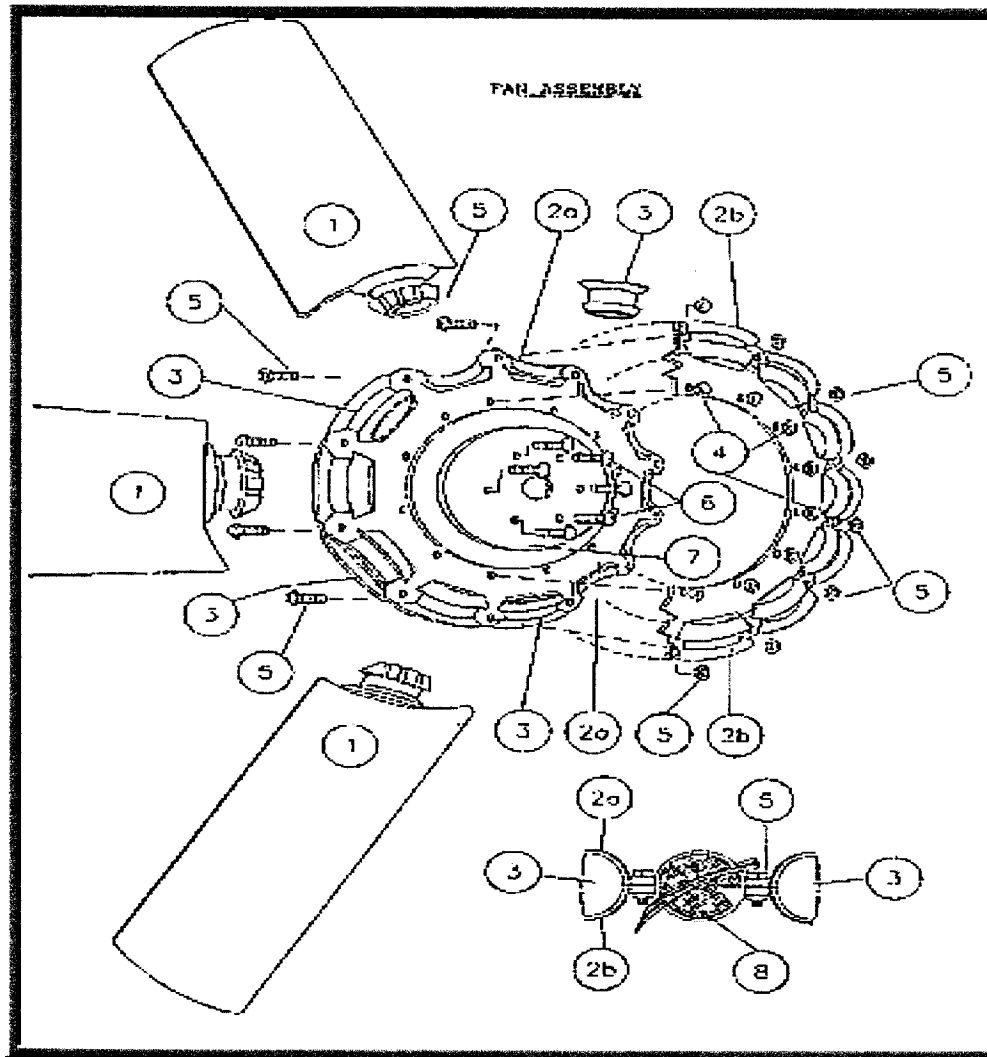
No	Part No.	Description
1	7205	Screw, M 10/32 x 1 PHP
2	9200	Washer, Shoulder 5/16"
3	9204	Rudder Connecting Bar
4	7403	Nut, Lock 10/32 SS
5	9202	Rudder, A Assembly Offset
6	9203	Rudder, B Assembly
7	9206	Rudder, B Assembly Offset
8	7204	Screw, 1/4"-28 x 1" Hex SS
9	7504	Washer, Flat 1/4" SS
10	7402	Nut, Lock 1/4"-28 SS
11	9201	Rudder, Upper Pivot
12	9205	Washer, Shoulder 1/2"
14	9208	Rudder, Lower Pivot
15	9014	Cable Clamp
16	7207	Screw 10-32 x 3/4" PHP SS
17	7403	Nut, Lock 10/32 SS
18	9003	Ball Joint



No	Part No.	Description
1	9004	Handle Bar Assembly
1a	9005a	Handle Bar (Black)
1b	9005b	Handle Bar Stem
1c	9011L	Handlebar Grip (Left)
1d	9012	Magura Throttle Grip Twist
	9012b	Throttle Grip Boot/Splitter Boot
3	9019	Steering Unit
4	7208	Screw, 5/16"-18 x 3/4 HH SS
5	7505	Washer, Flat 5/16" x 1 1/2 SS
6	9010	Steering Bushing
7	7209	Screw, 8-32 x 3/4" PHP SS
8	7405	Nut, Lock 8-32 SS
9	9003-1	Clevis
10	7207	Screw, 10-32 x 3/4" Hex SS
11	7403	Nut, Lock 10-32 SS
12	9014	Cable Clamp
13	7207	Screw, 10-32 x 3/4" Hex SS
14	7403	Nut, Lock 10-32 SS
15	9013-12	Steering Cable 12ft (SCAT 1 & 2)
	9013-15	Steering Cable 15ft (SCAT 12)
16	9009	Throttle Cable 12ft (SCAT 1 & 2)
	9009b	Throttle Cable 12" Inch (SCAT 1 & 2)
	9008	Throttle Cable 15ft (SCAT 12)



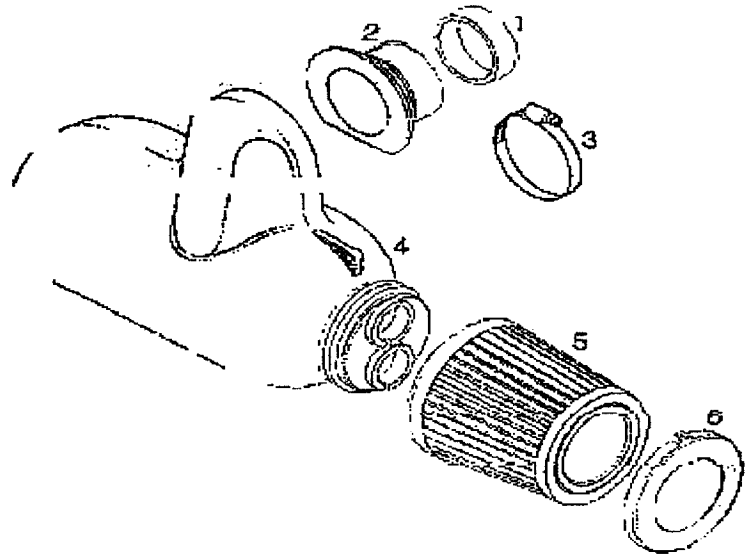
SCAT 1, 2 & 12 Hovercraft Parts



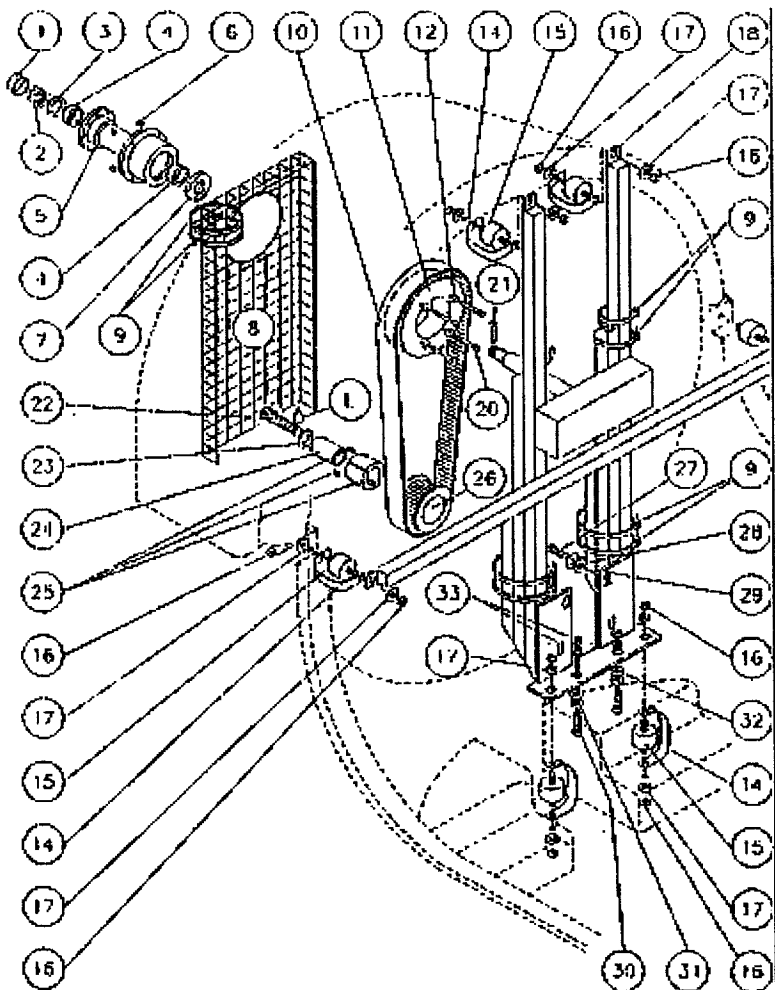
No.	Part No.	Description
1	4041R	4 ZR Blades (Right Rotation)
1	4041L	4 ZL Blades (Left Rotation)
2	4025	Fan Hub, 12 Blade
3	4055	Fan Hub Socket Plug
4	7203	Screw, Cap 1/4-28 x 3/4"
4	7402	Nut, Lock 1/4-28 SS
5	7204	Screw, Hex 1/4-28 SS
5	7402	Nut, Lock 1/4-28 SS
6	7206	Screw, M8 x 30 & Locknut
7	827-830	Coverwasher
8	4030	Blade Jig

SCAT 1 Hovercraft Parts

No.	Part No.	Description
1	860-160	Adapter Ring
2	825-440	Adapter
3	951-790	Clamp, Air filter
4	825-337	Intake Silencer Assembly
4	825-337U	Used Intake Silencer Assy
5	3920F	Air Filter (After Market)
6	825-520	Air Filter Cap



No.	Part No.	Description
1	5002	Dust Cap, Drive Casting
2	7407	Nut, Castle 5/8" -18
3	7508	Washer, Flat 5/8" -18 SS
4	5003	Bear, Drive Casting
5	5001	Drive Casting
6	7406	Nut, Lock 5/16" -18 SS
7	5004	Seal - Drive Hub Bearing
8	5005	Belt Guard
8	5005U	Used Belt Guard
9	6007	Cable Ties, Black
10	5021	Drive Belt, Kevlar
11	5022	V- Belt Kit
11	5047U	Used Fan Drive Pulley
12	7509	Washer, Flat 5/8" -18 SS
14	5006	Engine Mount Safety Strap
15	2002-1	Motor Mount M/M (3/8")
16	7404	Nut, Lock M10 SS
17	7507	Washer, Flat M10.5 SS
18	5007	Frame- Engine Mount
20	7210	Screw 5/16" - 18 x 3
21	7601	Cotter Pin 1/8" x 1 1/2" SS
22	7211	Screw 1/2" -20 x 2 1/2"
23	7510	Washer, Lock 1/2"
24	5027	Adapter, Crankshaft
25	5028	Taper Lock 1 3/8"
26	5012	Drive Pulley 1 1/2"
27	7212	Screw M8 x 25
28	7509	Washer, Flat 5/16" SS
29	7511	Washer, Lock 5/16" SS
30	7213	Screw M10 x 45 SS
31	7512	Washer, Lock M10 SS
32	7513	Washer, Flat M10
33	7408	Nut, Jam M10
	7409	Lower Fan Guard



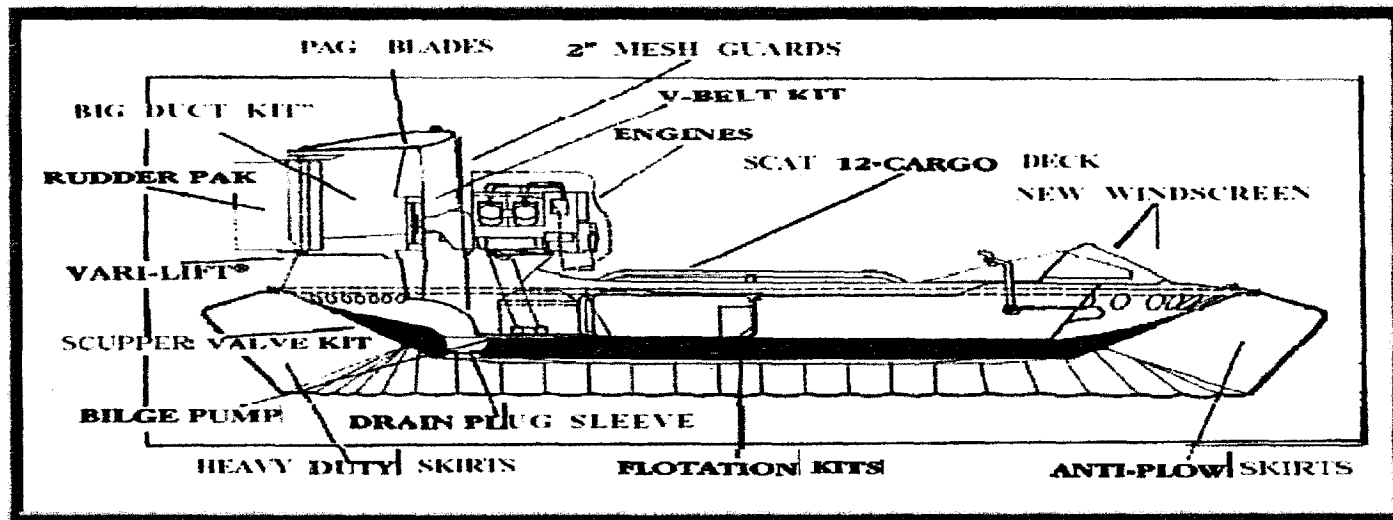
SCAT Upgrades & Accessories

HOVERCRAFT ACCESSORIES

Part No.	Description
1050	Hovercover, Grey (9'5" Hovercrafts)
1051	Hovercover, Grey (12' Hovercrafts)
	Hovercovers Available for other craft Please call for Information
8003	Navigational Lights, Front (SCATS 1, 2, & 12)
8033	Navigational Lights, Rear (SCATS 1, 2, & 12)
1130	SCAT Operators Manual
1055-18	18" Stainless Steel Oval Handrail
1055-24	24" Stainless Steel Oval Handrail
1055-36	36" Stainless Steel Oval Handrail
H-12	Hull Assembly (12 Foot Crafts)
H-9.5	Hull Assembly (9/12 Foot Crafts)
1005	Cleat, 6 1/2 "
7008	Fuel Tank Cover (SCAT 1)
3020	Fan Guard Assembly (SCAT 1)
9100	12' Oil Injection Cable
9100S	12' Stainless Steel Oil Injection Cable

The Floatation Kit

Is durable, easy to install, increases the flotation of your Hovercraft, and adds 135 pounds of extra flotation to a 9'5" foot Hovercraft, and 175 pounds of extra flotation to a 12' foot Hovercraft. The kit includes; Installation instructions, (45) 3/16" Rivets, (11) 21" Nylon Straps, (2) 62" Floats (84" on 12ft Hovercrafts) (1) 36" Float, and (74) Skirt Ties. Tools Required for Installing the Kit: (1) Tube of Silicon, (1) Rivet Gun for 3/196" Rivets, (1) Drill & 3/16" Bit, (1) Set of Wire cutters to clip skirt ties.



9'5" Hovercraft Floatation Kit
 12' Hovercraft Floatation Kit

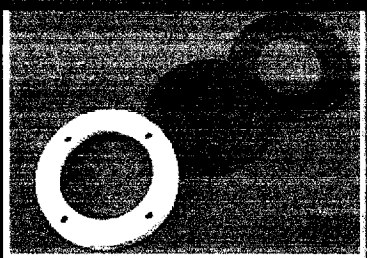
P/N: 1057
 P/N: 1058

SCAT Hovercraft Upgrades & Accessories

SCUPPER VALVE KIT; for (SCAT 1)

Designed to seal up wholes keep water out and enhance the floatation of your SCAT 1. This kit includes: (12) plastic Patches, (48) Rivets, and (2) Scupper valves

Valve Kit Part Number: 1070
Scupper Valve Part Number: 1062

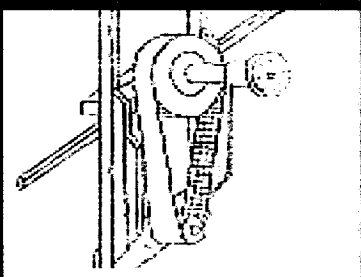


Scupper Valve

V-BELT KIT; for (SCAT 1)

Created to give peace of mind to the SCAT 1 owner. V-Belt is the best replacement for frequently broken drive Fits the current mount arrangement and includes: Lower pulley, Upper pulley, V-Belt and accessories

Kit Part Number: 5022
V- Belt Part Number: 5024



Scat 1 V-Belt Kit

ANTI-PLOW SKIRT; for (SCATS 1, 2, & 12)

To prevent your craft from Plowing in; add 2 to 4 Anti Plow Skirts to the front of your Hovercraft

Anti Plow Skirt Part Number : 6011

RUDDER PAK; for (SCAT 1)

Designed to improve the steering and performance on your SCAT 1. This kit includes: (2) Rudders, (1) Rudder Bar, belts, attachments, and installation instructions.

Rudder Pack Part Number: 1061

VARI -LIFT®; for SCATS 2 & 12)

This System not only allows you to control the height of your splitter plate, but converts the fixed splitter plate to be adjustable, and once in flight, thrust performance increases by 29% and Hovercraft spray is reduced upon take off.

Part Number: 3014 \$565.00

VARI -LIFT MOTOR
Part Number: 3015

ENGINE CONVERSION KITS; for (SCATS 1, 2, & 12)

To increase the performance of your Hovercraft and decrease noise; consider an engine upgrade.
Call for Details 561-274-2247

SCAT Hovercraft Upgrades

CONVERTIBLE CABIN

CONVERTIBLE CABIN

These Convertible Cabins not only keep you and your passengers dry while fully closed but the rear, sides fold up and down creating a beautiful Bimini Top.

9'5" Hovercraft P/N: 1068
12' Hovercraft P/N: 1069



BIG DUCT KIT For SCATS 2 & 12

Designed to increase Duct size; adds 54% Thrust increase using the same engine. Improves the effectiveness of the fan by reducing the sound of the hovercraft and increases it's speed. This kit includes: (1) Engine Mount, (1) Fan Guard, (1) Upper Rudder Bar (1) Lower Rudder Bar, (1) Deck, (1) Duct (1) Duct Cover (1) Vari-Lift® and (1) Vari-Lift® Splitter (6) 5ZR fan Blades and (1) Cutting Template

Part Number: 3012

*(BIG DUCT® Installation is available,
Please call for details)*



Convert a SCAT 12 into a craft for Rescues or just carry cargo
(Installation is easy, by taking the place of the rear seating area)

CARGO/STRETCHER DECK for (SCAT 12)

PART NUMBER: 1063

CARGO BASE for (SCAT 12)

PART NUMBER: 1064

CARGO SET for (SCAT 12)

PART NUMBER: 1065



Hovercraft Upgrades & Accessories



Drain Plug Tube
Part Number: 1016



Tiny Tach
Part Number: T-101



Bilge Pump & Switch
Part Number: 1017



Drain Plug
Part Number: 1015



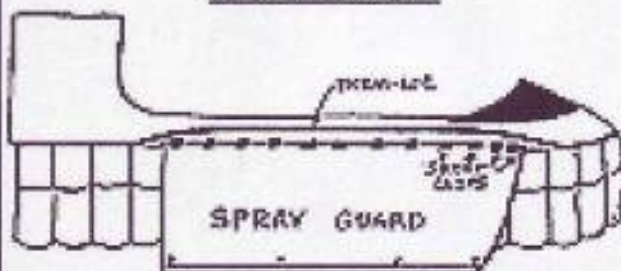
Toggle Switch
Part Number: E202

Toggle Boot Seal
Part Number: E103



12 Volt Socket Adapter
Part Number: 9930

SPRAY GUARD



Helps prevent Drivers and Passengers
From getting sprayed from the side of the Hovercraft

PART NUMBER: 6009

Hovercraft Repair Supplies & Accessories



**8 oz Spray Bottle
Part Number: 1100**



**Ear Plugs
Part Number: 1145**

GEL COAT PAINT REPAIR

Repair Damaged Paint Areas On
Your Hovercraft

- 1 Pint Red P/N:1020
- 1 Quart Red P/N:1021
- 1 Pint White P/N:1020
- 1 Quart White P/N:1021
- 1 Pint Blue P/N:1020
- 1 Quart Blue P/N:1021

ABS PLASTIC REPAIR

Repairs Cracked or Damaged
Bodywork

- 1 Quart Part Number: 1023Q
- 1 Gallon Part Number: 1023G

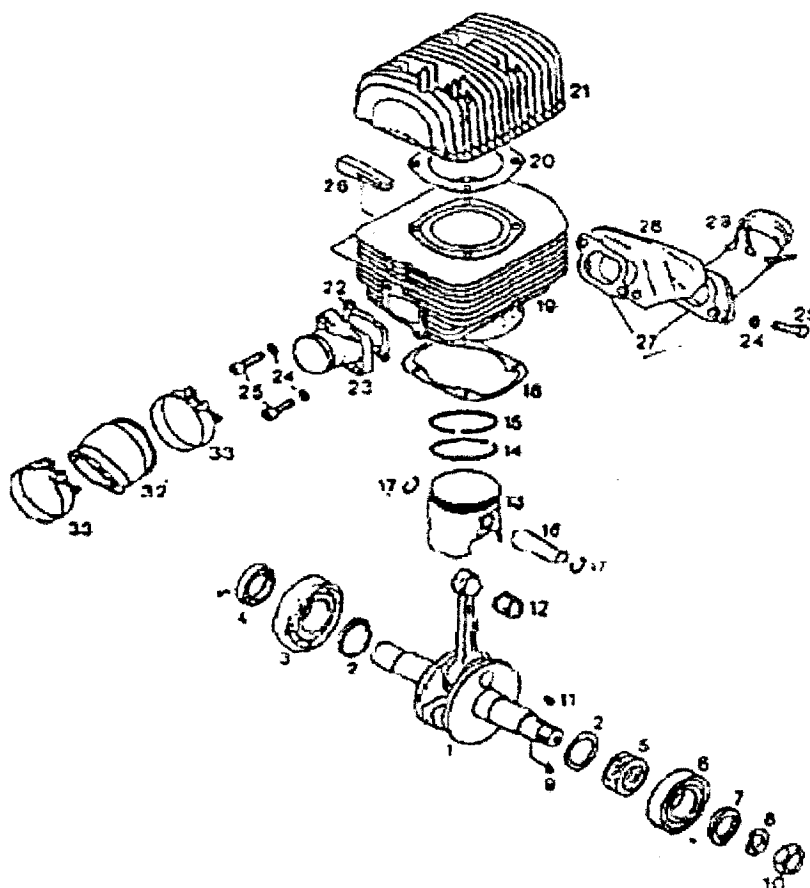
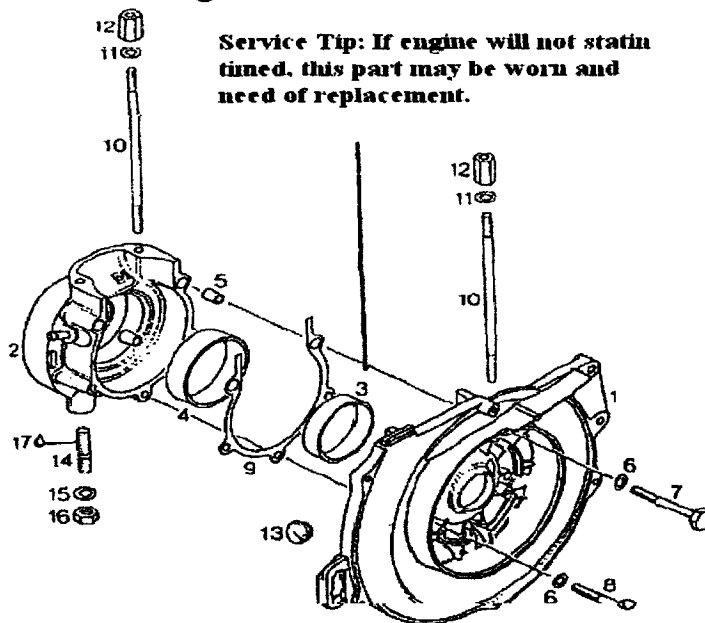
REPAIR, SERVICE AND OPERATORS MANUALS	
Part No.	Description
1204	Cuyuna Service Manual
1205	Cuyuna Parts Manual
1206	Rotax Repair Manual (462,532,582)
1207	Polaris Snowmobile Manual
1208	Rotax 670 Parts & Repair Manual
1209	Konig Parts & Repair Manual
1210	Rotax Operator's Manual (Rotax 503)

ROTAX 277 Engine Parts

No.	Part No.	Description
1-8		Crank Case Assembly
3	960-765	Crankcase Ring (MAG)
4	260-470	Crankcase Ring (PTO)
5	229-150	Dowel Tube 11.8 x 15
6	945-752	Lockwasher, 8mm
7	841-311	Hex Screw M8 x 75
8	240-320	Hex Screw M8 x 55
9	850-060	Crankcase Gasket
10	840-620	Stud M8 x 175
11	250-311	Washer
12	842-010	Distance Nut M8 x 27.5
13	960-285	Cable Grommet 20,5/6, 3
14	940-190	Stud M10 x 31/20
15	945-753	Lockwasher, 10mm
16	242-091	Hex Nut M10

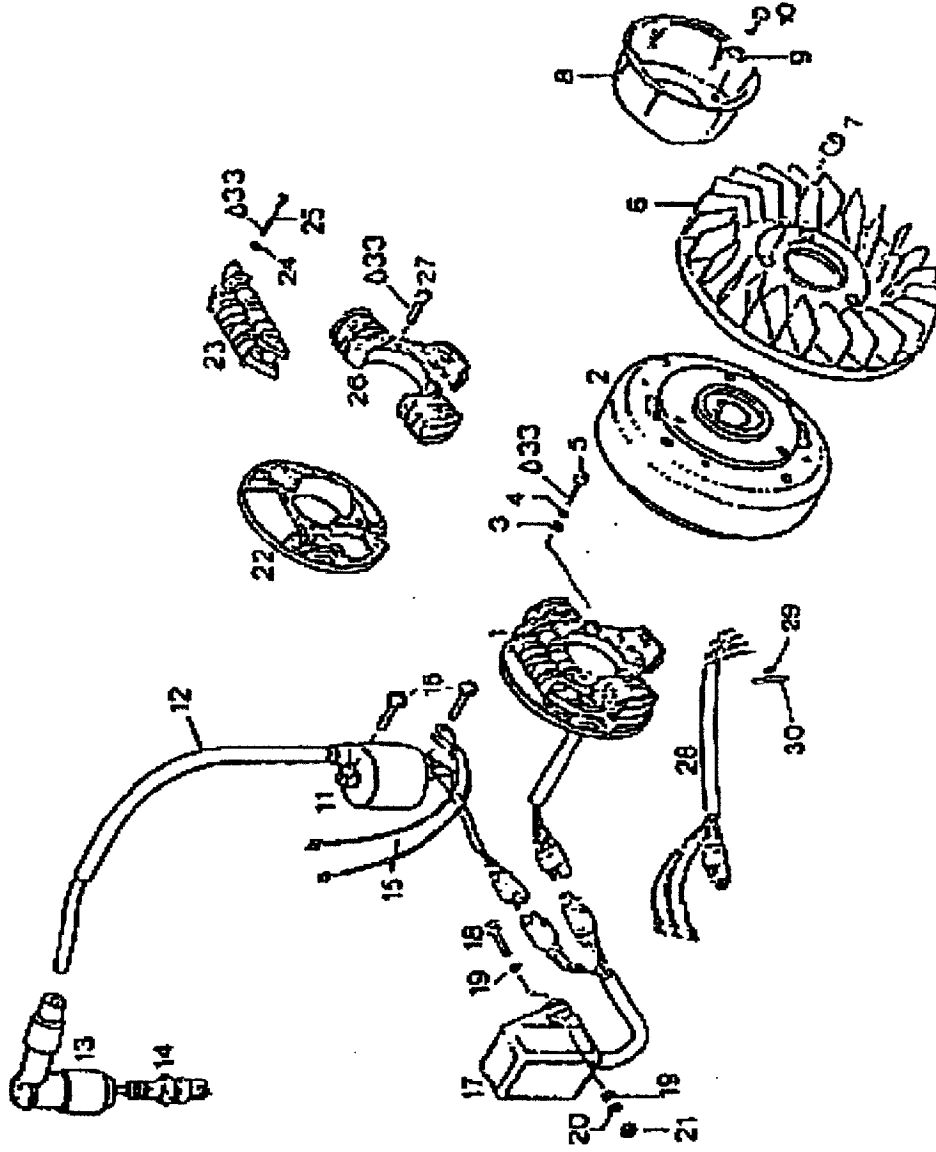
No.	Part No.	Description
1		Crankshaft Assembly
2	827-440	Spacer Ring (PTO)
3	932-571	Ball Bearing 6306 (PTO)
4	850-050	Oil Seal 30 x 47 x 7/7,5 NBR
5	944-582	Shim 30,4/40,5/0,3
6	932-581	Ball Bearing 6206 (MAG)
7	230-425	Oil Seal 28 x 38 x 7
8	945-757	Lockwasher 18
10	942-220	Hex Nut M18 x 1.5
11	246-055	Woodruff Key 3 x 3,7 DIN 6888
12	832-300	Needle Bearing 25 x 32 x 16
13	996-245	Piston, Standard W/2 Rings
13	996-246	Piston, 1st Over W/2 Rings
13	996-247	Piston, 2nd Over W/2 Rings
14	915-850	Ring, Rectangular- Standard
14	915-851	Ring, Rectangular- 1st Over
14	915-852	Ring, Rectangular- 2nd Over
15	215-235	Ring, Semi Trapez- Standard
15	215-236	Ring, Semi Trapez - 1st Over
15	215-237	Ring, Semi Trapez 2nd Over
16	916-186	Piston Pin 18 x 11 x 58,7
17	945-735	Circlip 18
18	831-855	Gasket 0,4mm
19	823-767	Cylinder With Sleeve
20	850-081	Gasket, inder Head
21	823-780	Cylinder Head
22	831-866	Gasket, Intake Manifold
23	867-421	Intake Manifold
24	945-752	Lock Washer, A8
25	840-991	Screw, Allen M8x30
26	860-100	Rubber Fins
27	831-846	Gasket, Exhaust Socket
28	975-720	Air Deflector
29	879-050	Exhaust Socket Assembly
32	867-489	Rubber Socket "Carb Flange"
33	951-510	Hose Clamp 52

Service Tip: If engine will not statin timed, this part may be worn and need of replacement.

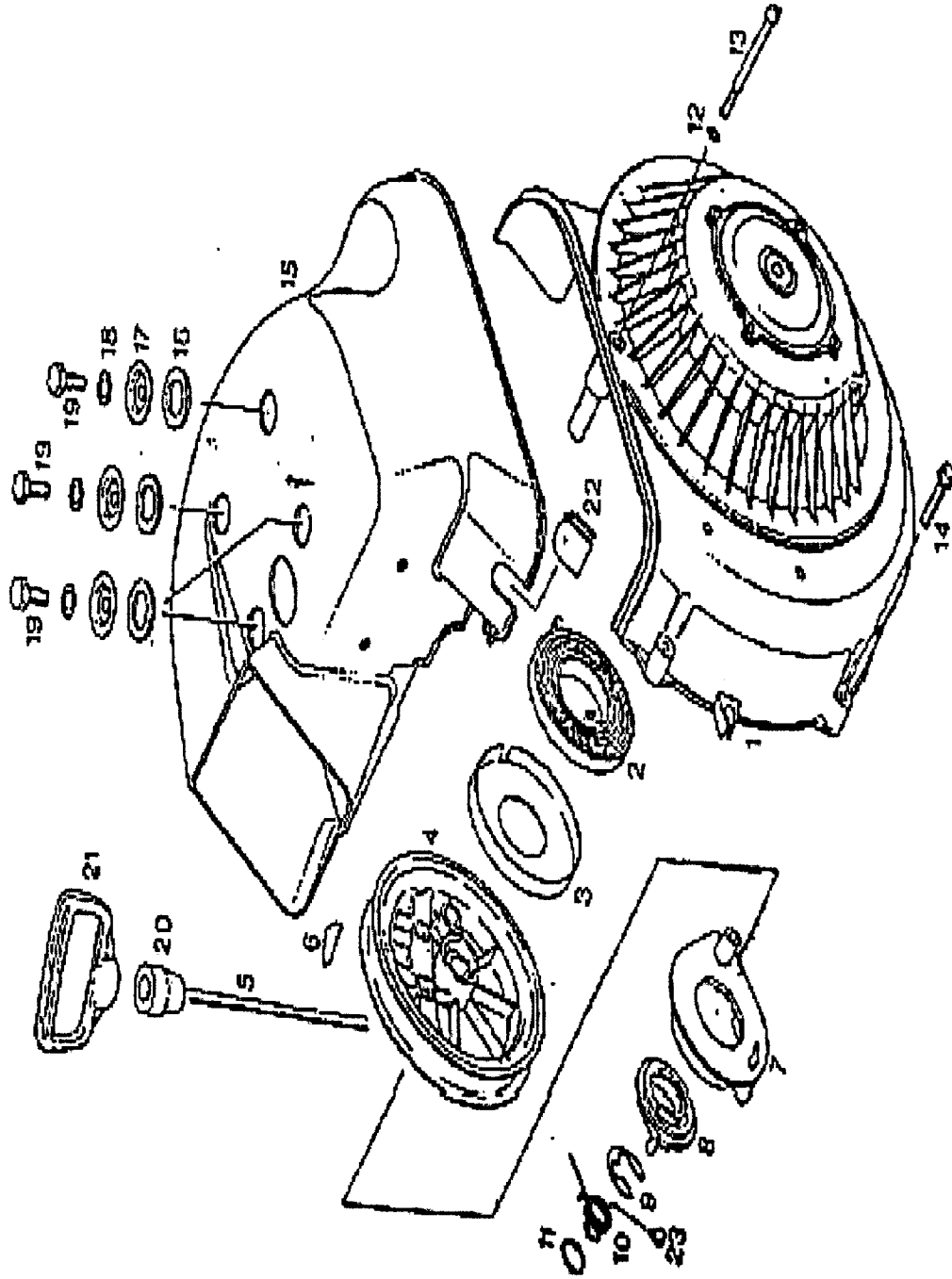


ROTAX 277 Engine Parts

No.	Part No.	Description
1	995-100	Armature Plate Assembly
2	995-110	Magneto Flywheel Assembly
3	827-800	Washer A 5,5 DIN 6902
4	945-750	Lockwasher A5
5	840-515	Allen Screw M5 x 18
6	866-430	Fan
7	847-500	Distance Sleeve
8	852-422	Pulley, Starting Cup
9	945-752	Washer, Lock A8
10	240-275	Hex Screw M8 X 25 DIN 933
11	866-660	Ignition Coil With Cable
12	260-437	Protection Hose 150mm
13	866-705	Suppressed Spark Plug Conn.
14	1147	Spark Plug, B8ES
15	865-993	Mass Cable Assembly
16	841-550	Taprite Screw M5 x 22
17	8200NR	CDI Unit- Nipendeno
18	940-561	Hex Screw M6 X 20
19	244-211	Washer 6, 4 DIN 134
20	945-751	Lockwasher A6 DIN 128
21	242-211	Hex Nut M6
22	866-655	Armature Plate
23	866-635	Coil Kit, Primary
23	635RAM	Coil Kit, Primary - After Market
24	945-750	Washer, Lock A5
25	841-506	Allen Screw M5 X 35
26	866-625	Lighting Coil
27	841-540	Screw, Taprite M5 x 22
28	866-645	Wire Assembly
29	264-530	Splice Connector
30	260-412	Shrink Tube 30 MM



ROTAX 277 Engine Parts



No.	Part No.	Description
1-11	994-882	Fan Cowl With Rewind
1-11	994-882U	Fan Cowl Assembly (Used)
1	910-016	Fan Cowl Assembly
2-3	984-454	Spring Cartridge Assembly
4	852-282	Rope Sheave
5	852-097	Starter Rope 2200MM
6	852-070	Key Clamp
7	852-290	Pawl
8	852-302	Pawl Lock
9	845-300	Retaining Ring
10	938-985	Locking Spring
11	945-770	Snap Ring AV 17
12	945-751	Lock Washer A6 DIN 128
13	941-061	Screw, Slotted Head M6 x 73
14	941-505	Taprite Screw M6 x 30
15	910-022	Cylinder Cowl
16	960-860	Rubber Washer 19/28/3
17	827-143	Cowl Cover
18	945-752	Lockwasher A8
19	940-581	Hex Screw M8 x 16
20	960-415	Rubber Buffer
21	852-177	Starter Grip (Call)
22	960-287	Cable Grommet

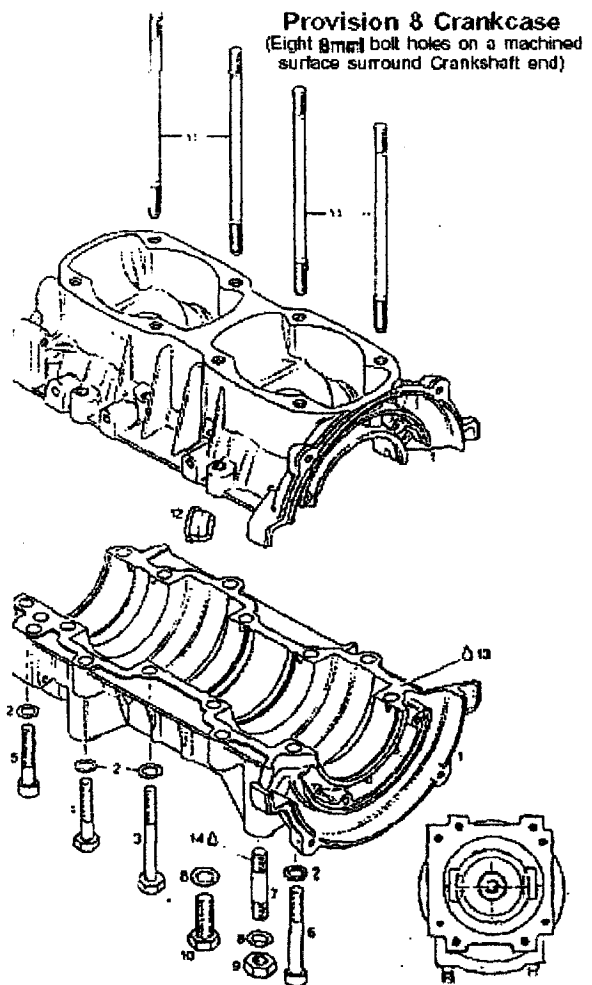
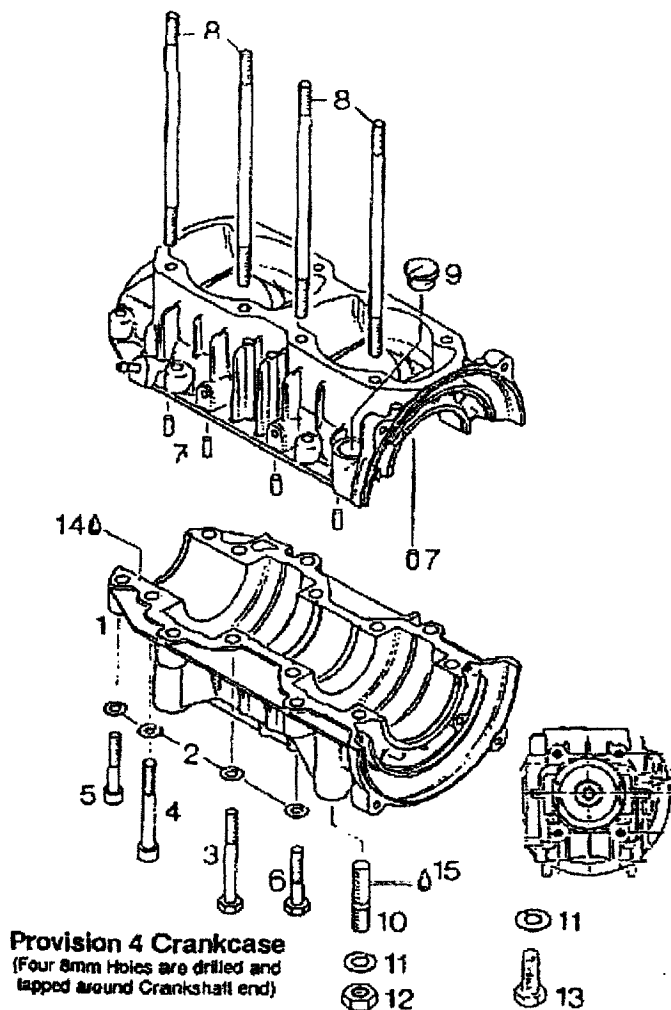
ROTAX 503 Engine Parts

CRANK CASE ASSEMBLY WITH 4 HOLE GEAR BOX & ADAPTER PLATE; Before Serial No.: 3786750

No.	Part No.	Description
1-6	995-756	Crankcase Assembly
2	945-752	Lockwasher, Lock A8
3	841-201	Screw, Hex M8 x 70
4	841-831	Screw, Allen M8 x 75
5	841-561	Screw, Allen M8 x 45
6	940-631	Screw, Hex M8 x 45 DIN 931
7	960-951	Rubber Plug
8	840-556	Stud, M8 X 173,5
9	960-285	Cable Grommet 20,5/6,3
10	940-190	Stud M10 x 31/20
11	945-753	Lockwasher Washer, Lock A10
12	242-091	Hex Nut M10
13	940-326	Screw, Hex M10x30
14		Locktite 574
15		Locktite 242

CRANK CASE ASSEMBLY WITH 4 HOLE GEAR BOX & ADAPTER PLATE; After Serial No.: 3786750

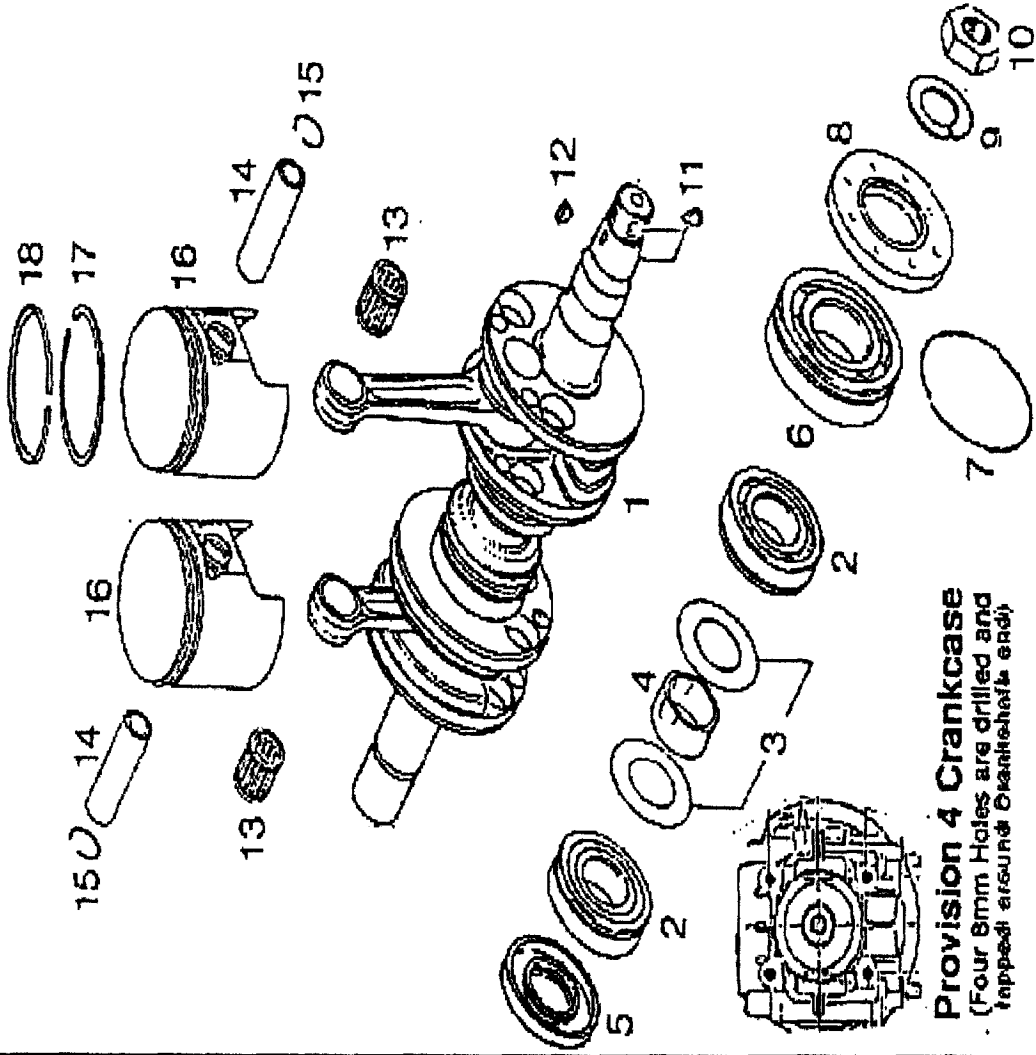
No.	Part No.	Description
1-6	887-796	Crankcase Assembly
2	945-752	Washer, Lock A8
3	841-201	Screw, Hex M8 x 70
4	940-631	Screw, Hex M8 x 45 DIN 931
5	841-561	Screw, Allen M8 x 45
6	841-841	Screw, Allen M8 X 65 DIN 912
7	940-190	Stud M10 x 31/20
8	945-753	Lockwasher Washer, Lock A10
9	242-091	Hex Nut M10
10	940-326	Screw, Hex M10x30
11	840-556	Stud, M8 X 173,5
12	960-285	Cable Grommet 20,5/6,3
13		Locktite 574
14		Locktite 221



ROTAX 503 Engine Parts

CRANKCASE ASSEMBLY
 WITH 4 HOLE GEAR BOX & ADAPTER PLATE;
 Before Serial No.: 3786750

No	Part No.	Description
1	994-562	Crankshaft
2	832-209	B. Bearing, 6206
3	827-715	Stop Shim
4	847-390	Stop Tube
5	830-748	Oil Seal 30x62x7/7,5
6	832-231	Bearing B. 6207N
7	830-355	O-Ring 49, 2-1, 8
8	831-950	Oil Seal 35 x 72 x 7/8,5
9	945-759	Lockwasher 22
10	842-230	Hex Nut M22x1.5
11		Locktite
12	246-055	Woodruff Key 3x3,
13	832-300	Needle Bearing 25 x 32 x 16
14	916-185	Pin, Piston 18x11x58,7
15	945-735	Circlip 18
16	996-245	Piston, Standard W/ (2) Rings
16	996-246	Piston, 1st Over W/ (2) Rings
16	996-247	Piston, 2nd Over W/ (2) Rings
17	915-850	Ring, Rectangular - Standard
17	915-851	Ring, Rectangular- 1st Over
17	915-852	Ring, Rectangular- 2nd Over
18	215-235	Ring, Semi Trapez -Standard
18	215-236	Ring, Semi Trapez -1st Over
18	215-237	Ring, Semi Trapez -2nd Over

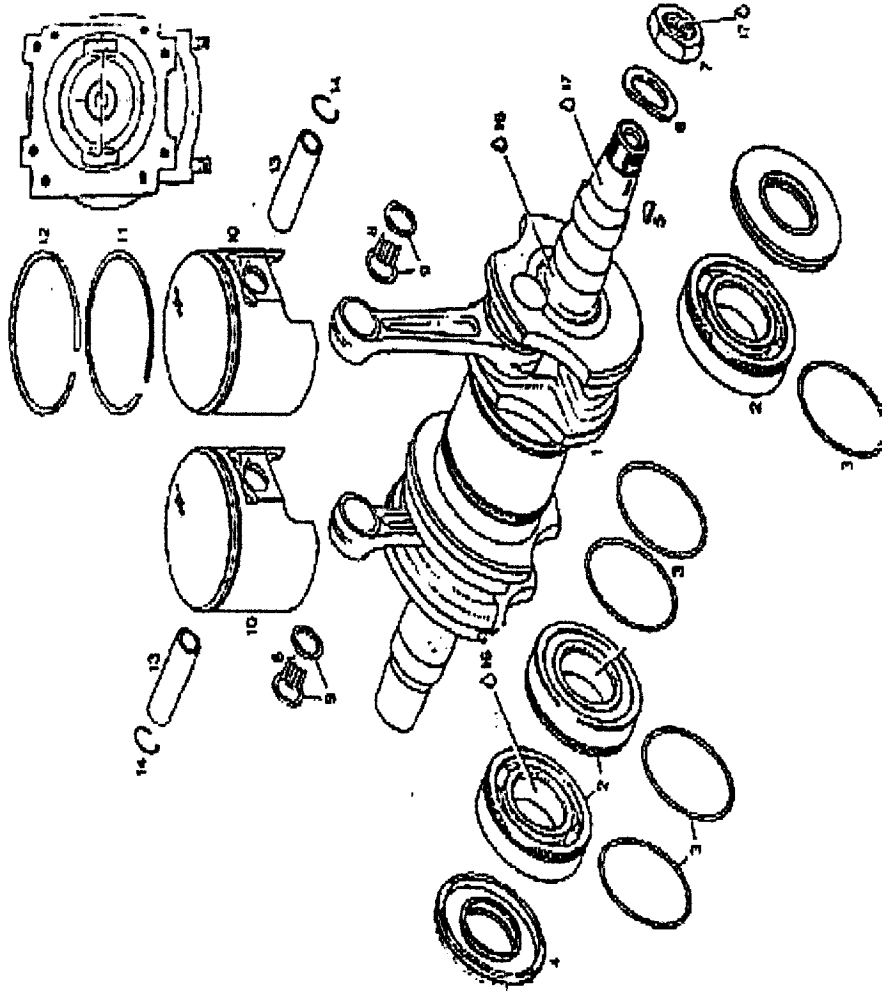


Provision 4 Crankcase
 (Four 8mm Holes are drilled and
 tapped around Crankshaft end)

ROTAX 503 Engine Parts

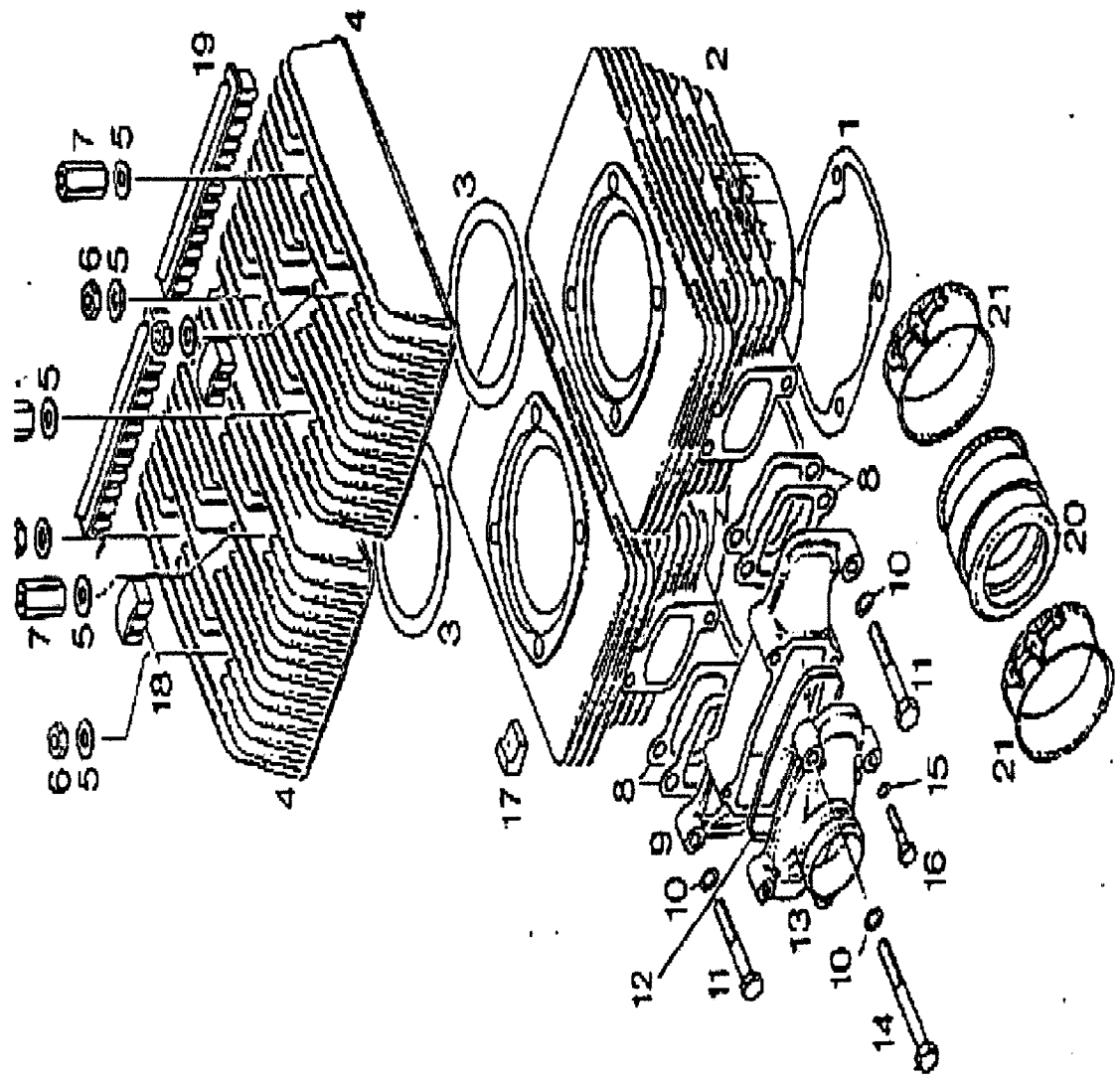
CRANK CASE ASSEMBLY WITH 4 HOLE GEAR BOX &
ADAPTER PLATE; After Serial No.: 3786750

No.	Part No.	Description
1	996-471	Crankshaft
2	832-231	Bearing B. 6207N
3	250-165	O-Ring 64-2
4	831-950	Oil Seal 35 x 72 x 7/8,5
5	246-055	Woodruff Key 3x3,7 DIN 6888
6	945-759	Lockwasher 22
7	842-230	Hex Nut M22x1.5
8	832-320	Cageless Needle Bearing
9	827-465	Thrust Washer 18/21,7/2,5
10	996-245	Piston, Standard W/ (2) Rings
10	996-246	Piston, 1st Over W/ (2) Rings
10	996-247	Piston, 2nd Over W/ (2) Rings
11	915-850	Ring, Rectangular - Standard
11	915-851	Ring, Rectangular- 1st Over
11	915-852	Ring, Rectangular- 2nd Over
12	215-235	Ring, Semi Trapez - Standard
12	215-236	Ring, Semi Trapez-1st Over
12	215-237	Ring, Semi Trapez- 2nd Over
13	916-186	Pin, Piston 18x11x58,7
14	945-735	Circlip 18



Provision 8 Crankcase
(Eight 8mm ball holes on a machined
surface around Crankshaft end)

ROTAX 503 Engine Parts



CRANKCASE ASSEMBLY
WITH 4 HOLE GEAR BOX WITHOUT ADAPTER
PLATE;

Before Serial No.:3786750

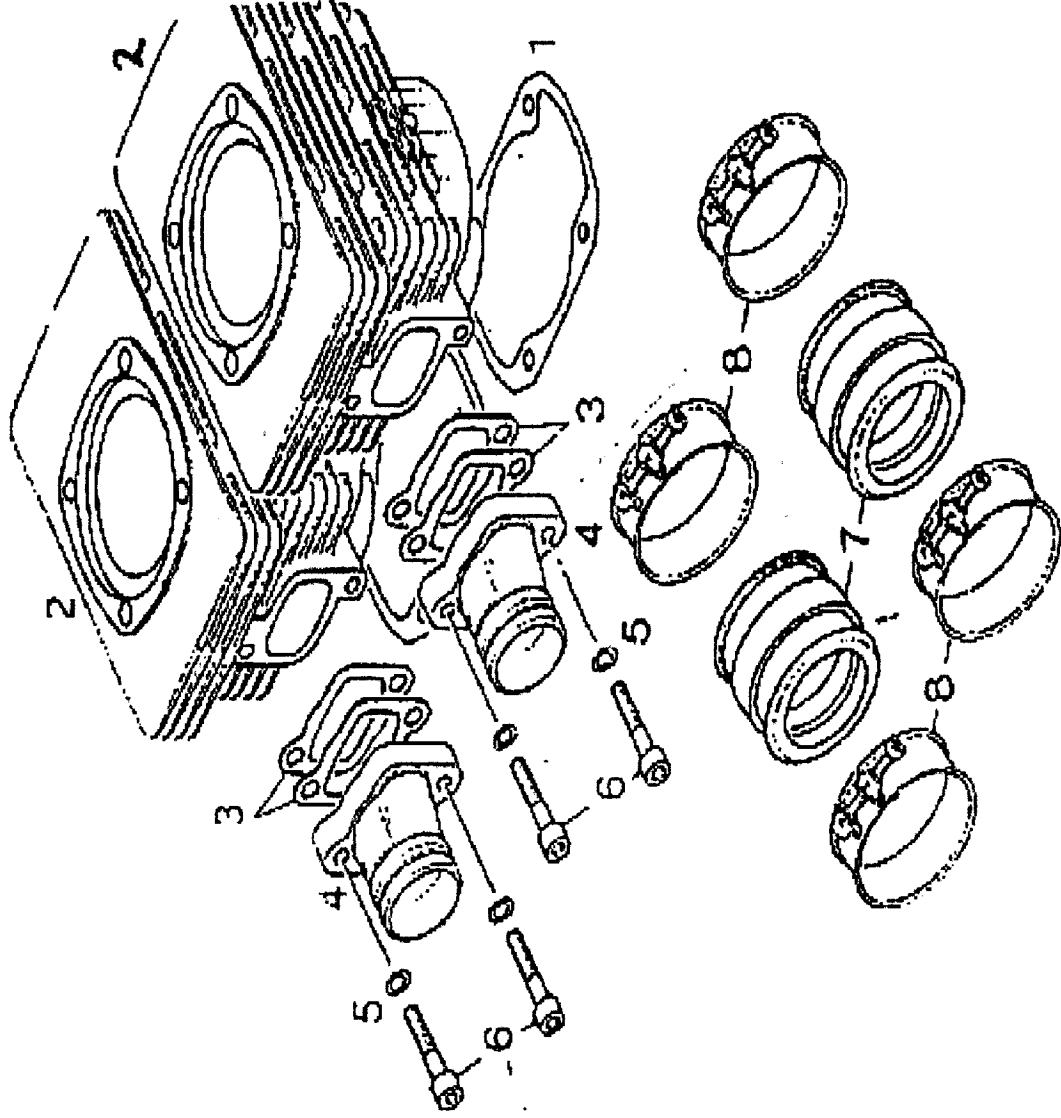
No	Part No.	Description
1	831-855	Base Gasket
2	923-416	Cylinder W/ Sleeve
3	831-881	Head Gasket
4	823-663	Cylinder Head
5	250-311	Washer
6	242-206	Hex Nut M8
7	842-050	Distance Nut M8 x 37
8	831-866	Gasket, Intake Manifold
9	867-450	Intake Manifold
10	945-752	Washer, Lock A8
11	940-616	Screw, Hex M8x40
12	850-150	Rubber Ring
13	867-465	Intake Cover
14	841-301	Hex Screw M8x65
15	945-751	Lock Washer A6
16	941-501	Screw, Hex M6 x30
17	860-060	Support Damper
18	860-095	Noise Damper, Short
19	860-090	Noise Damper, Long
20	867-484	Rubber Socket
21	951-510	Hose Clamp 52

ROTAX 503 Engine Parts

CRANKCASE ASSEMBLY WITH 4 HOLE GEAR BOX WITHOUT ADAPTER PLATE;

After Serial No.:3786750

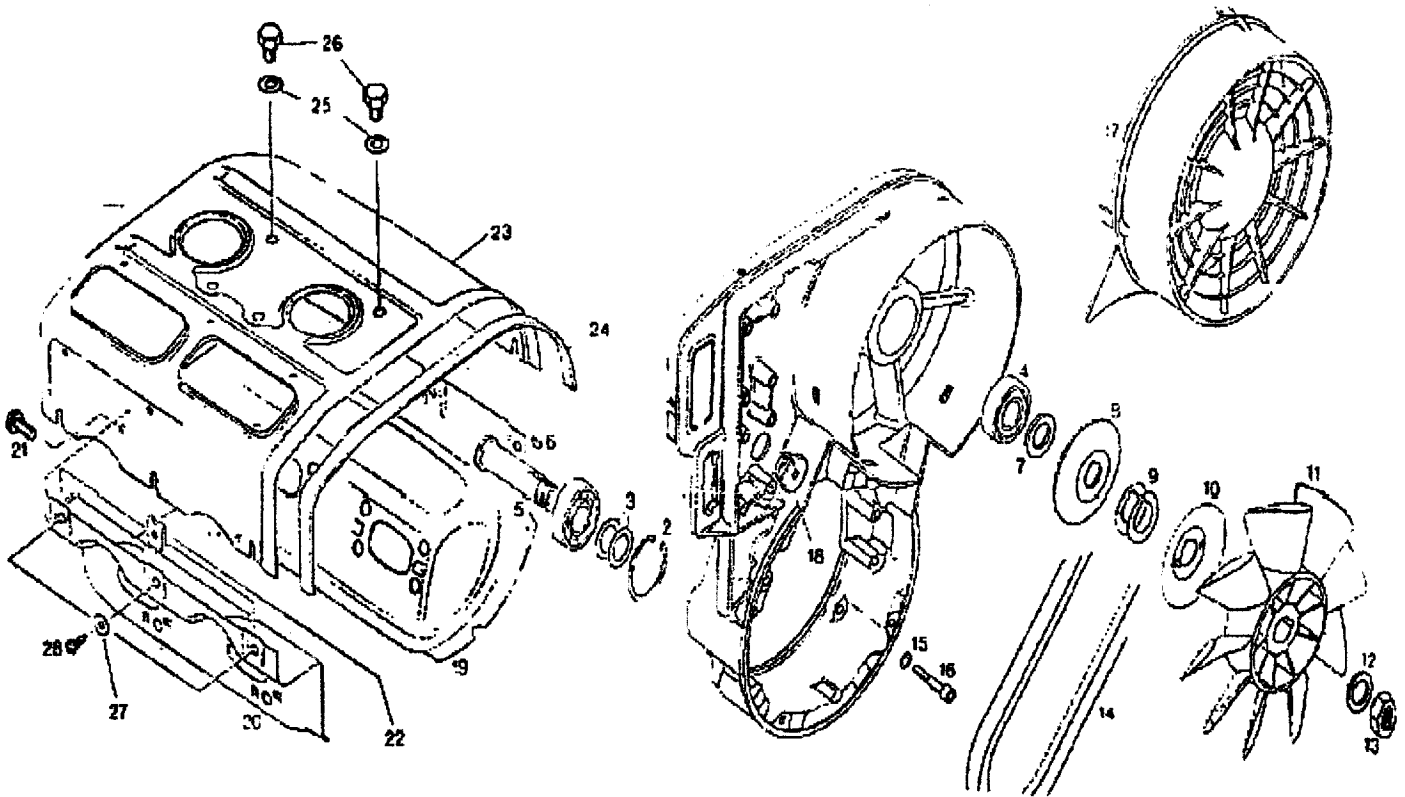
No	Part No.	Description
1	831-855	Base Gasket
2	923-416	Cylinder w/ Sleeve
3	831-866	Gasket, Intake Manifold
4	867-400	Intake Manifold
5	945-752	Washer, Lock A8
6	840-681	Allen Screw M8x40
7	867-484	Rubber Socket
8	951-510	Hose Clamp 52



ROTAX 503 Engine Parts

FAN HOUSING & COMPONENTS

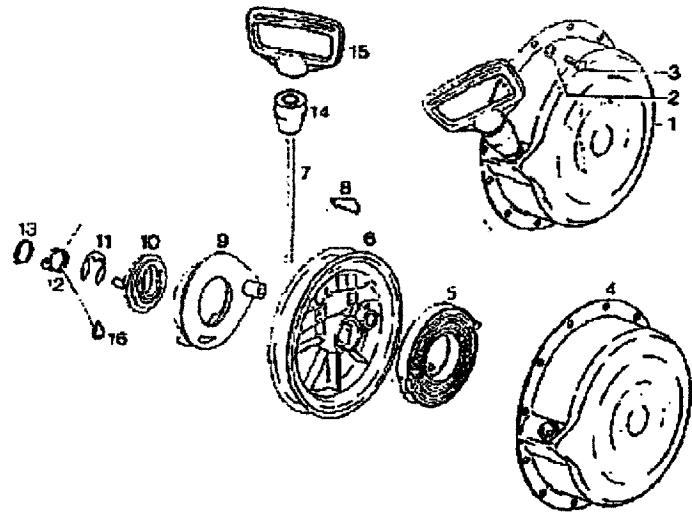
No.	Part No.	Description	No.	Part No.	Description
1	911-546	Fan Housing	15	945-751	Lock Washer A6
2	945-880	Retaining Ring 40X 1,75	16	840-880	Screw, Allen M6 x 30
3	244-585	Shim 17,5/24/1,0	17	975-695	Fan Cover
4	832-161	Bearing. B. 6203	18	960-287	Cable Grommet 20, 5/9
5	937-940	Fan Shaft	19	912-835	Cylinder Cowl
6	246-015	Woodruff Key 3x5	20	911-067	Cylinder Cowl, Lower Half
7	827-650	Distance Sleeve	21	240-385	Screw, Taptite M 6x12
8	980-496	Pulley Half	22	842-390	Nut, Spring V 4, 8
9	827-080	Shim 17,5/27/0,5	23	912-826	Cylinder Cowl, Upper Half
10	980-522	Protection Washer	24	960-961	Sealing Strip 440 MM
11	866-292	Fan	25	945-752	Washer, Lock A8
12	945-756	Lockwasher 16	26	940-580	Screw, Hex M8 x 16
13	942-285	Nut, Hex M16x 1,5	27	845-270	Washer 4,9X15,5X0,8
14	980-511	V- Belt 10 x 6x610	28	841-495	Screw, Self-Tapping 4.8x16



ROTAX 503 Engine Parts

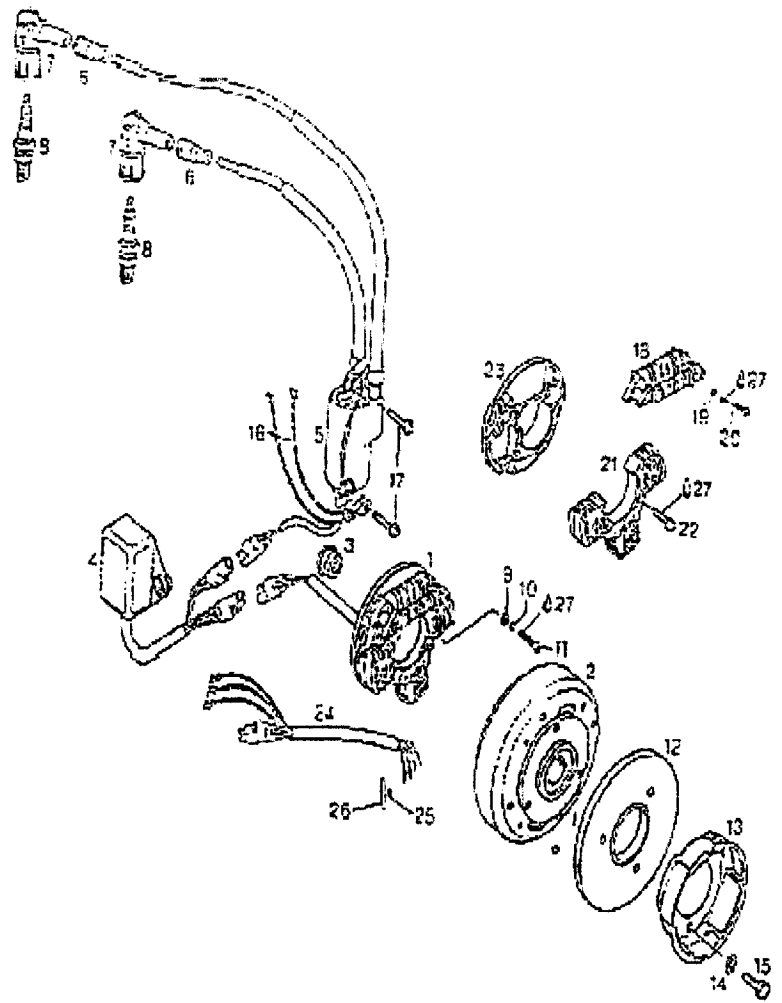
REWIND ASSEMBLY

Part No.	Description
1 994-874	Rewind Starter Assy
2 945-751	Lock Washer A6 DIN 128
3 240-911	Screw, Hex M6 X 14
4 910-067	Starter Housing Assy
5 939-078	Rewind Spring Assy
6 852-282	Rope Sheave
7 952-799	Starter Rope 5,5x1700MM
8 852-070	Key Clamp



MAGNETO GENERATOR 12v 160w & Starting Pulley

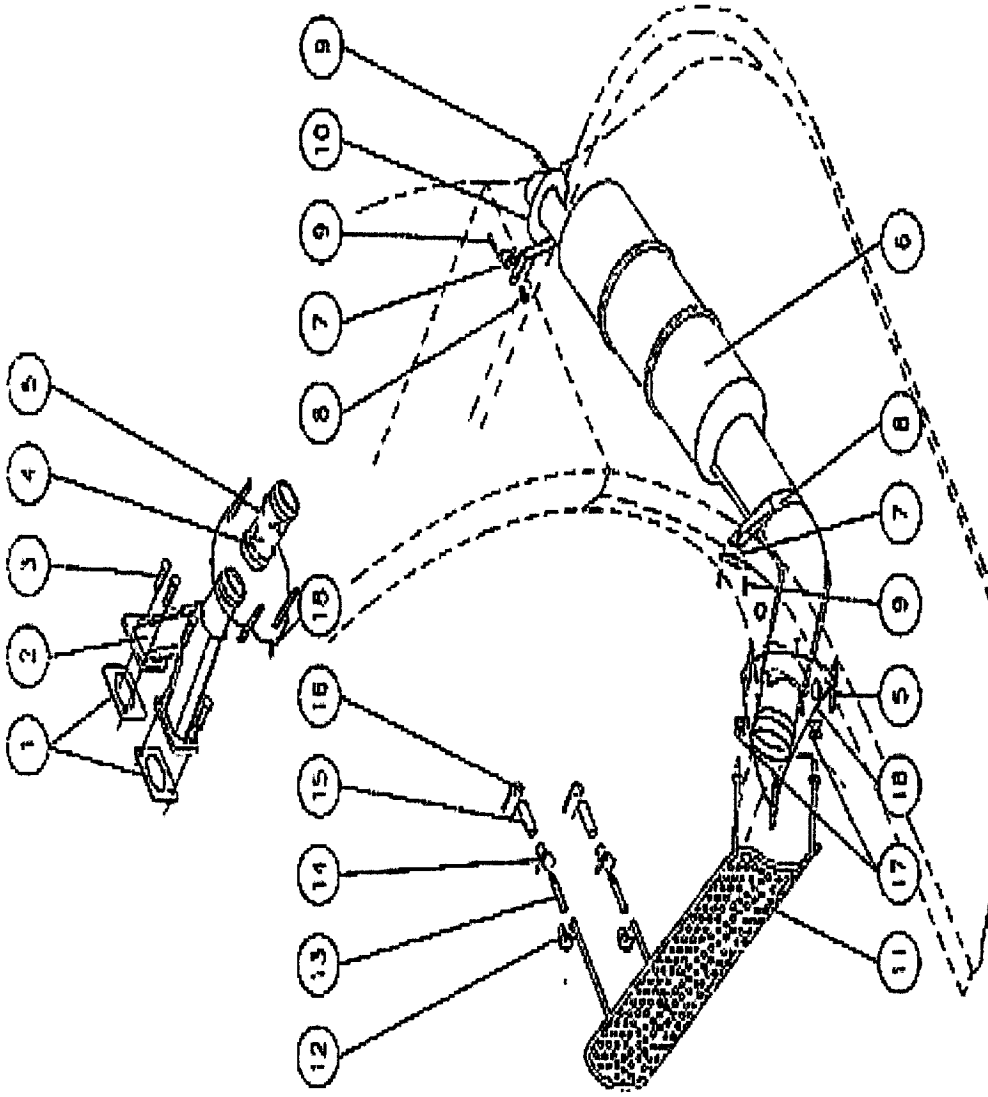
Part No.	Description
2 995-105	Stator Plate 12V 160W Assy
960-287	Cable Grommet 20, 5/9
866-599	Amplifier Box (5 Wire)
965-230	Amplifier Box (4 Wire)
866-607	Dual Ignition Coil
960-550	Protection Cap
983-409	Shielded Plug Cap
1147	Spark Plugs
827-800	Washer A 5,5
0 945-750	Washer, Lock A5
1 840-515	Screw, Allen M5x18
2 980-485	Pulley, V- Belt
3 852-320	Pulley, Starting
4 945-752	Washer, Lock A8
5 841-520	Screw, Allen M8 x 12
6 865-993	Mass Cable Assembly
7 841-540	Screw, Taptite M5 x 22
8 866-635	Coil Kit, Primary
9 945-750	Washer, Lock A5
0 841-506	Allen Screw M5 X 35
1 866-625	Lighting Coil
2 841-405	Screw M6X 25
3 866-655	Armature Plate
4 866-645	Wire Assembly
5 264-530	Connector, Splice
6 260-412	Tube, Shrink 30 MM



ROTAX 503 Engine Parts

EXHAUST SYSTEM COMPONENTS

No	Part No.	Description
1	831-842	Exhaust Gasket 1mm
2	878-937	Exhaust Manifold, 503
3	840-991	Screw, Allen M8x30
3	7508	Lock Washer M8
4	973-180	Elbow Assembly, Connecting
5	EXH3	Exhaust Springs
6	9035-IP	Exhaust Assembly (Black)
7	EXH1-1	Exhaust Mounts 8mm
8	7209	Screw, 5/16" -24x1" PHP SS
8	7509	Lock Washer 5/16" SS
9	7710	Rivet 3/16"
10	EXHP	Exhaust Plate, Rear (Black)
11	EXHG	Exhaust Guard Black
12	7004b	Metal Clip W. Rubber "T" Handle
13	7208	Screw, 10-32x2 1/2" SS
13	7403	Lock Nut 10-32 SS
14	7004b	Metal Clip W. Rubber "T" Handle
15	3029	Fan Guard Spacer
16	Page 6	Fan Guard Assembly
17	7300	Rubber Grommet 3/8"
18	7301	Safety Wire 10'



ROTAX A GEAR BOX

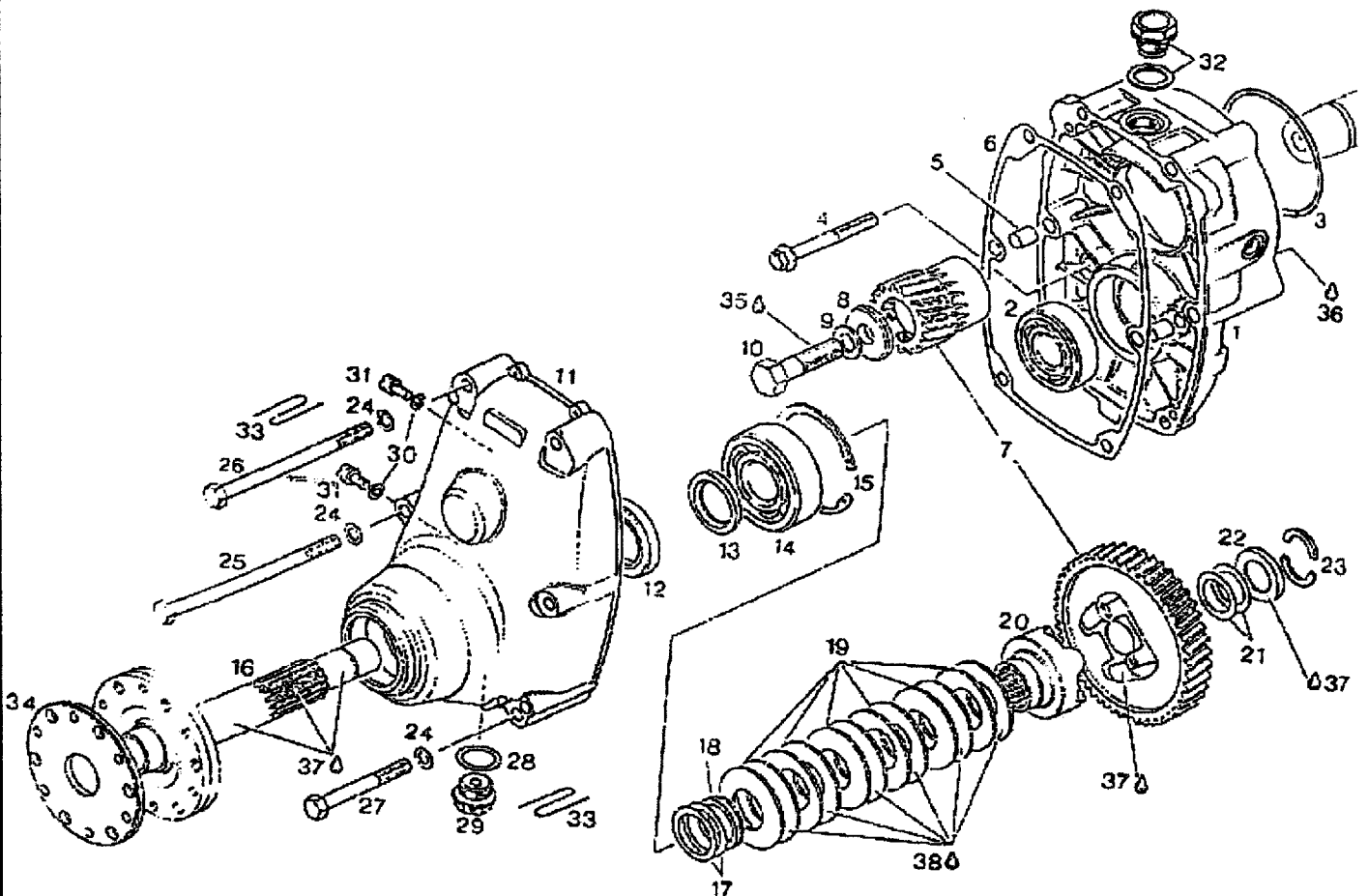
ROTAX A GEAR BOX WITH 4 HOLE PROVISION

No	Part No	Description	No	Part No	Description
1	850-430	O-Ring	22	944-470	Shim 25,5/34/O,2
2	910-505	Adapter	22	944-471	Shim 25,5/34/O,3
3	841-901	Stud 8 X 91	22	944-472	Shim 25,5/34/O,5
4	841-913	Stud 8 X 103	22	944-473	Shim 25,5/34/1
5	841-940	Screw 10 X 50	22	944-474	Shim 25,5/34/O,1
5	841-820	Screw 10 X 45	23	847-620	Distance Ring
6	850-360	O-Ring	24	939-020	Disc Spring
7	910-911	Gear Housing	25	958-770	Dog Hub
8	932-091	Bearing	26	See #7	Must Buy Matched Set
9	841-091	Stud 8 X 75	27	944-469	Thrust Washer
10	929-670	Dowel	28	827-841	Angular Ring
11	930-533	Gasket	29	827-862	Ring Half
12	886-200	Gear Set 2.58	30	945-752	Lock Washer 8mm
12	886-202	Gear Set 2.24	31	242-201	Nut 8mm
12	886-204	Gear Set 2.00	32	552-280	Gasket Ring
13	827-786	Washer	33	840-270	Magnetic Ring
14	945-765	Lockwasher	34	230-415	Gasket Ring
15	841-656	Screw 1/2 -20X50	35	841-781	Screw 6 X10
16	910-371	Gear Cover	36	941-115	Air Vent Screw
17	850-055	Oil Seal	37	974-530	Fuel Hose A5X8
18	837-029	Propeller Shaft	38		Safety Wires
19	827-850	Distance Ring	39	827-830	Cover Washer
20	932-820	Bearing	40		Loctite (221)
21	445-070	Retaining Ring	41		Loctite (290)

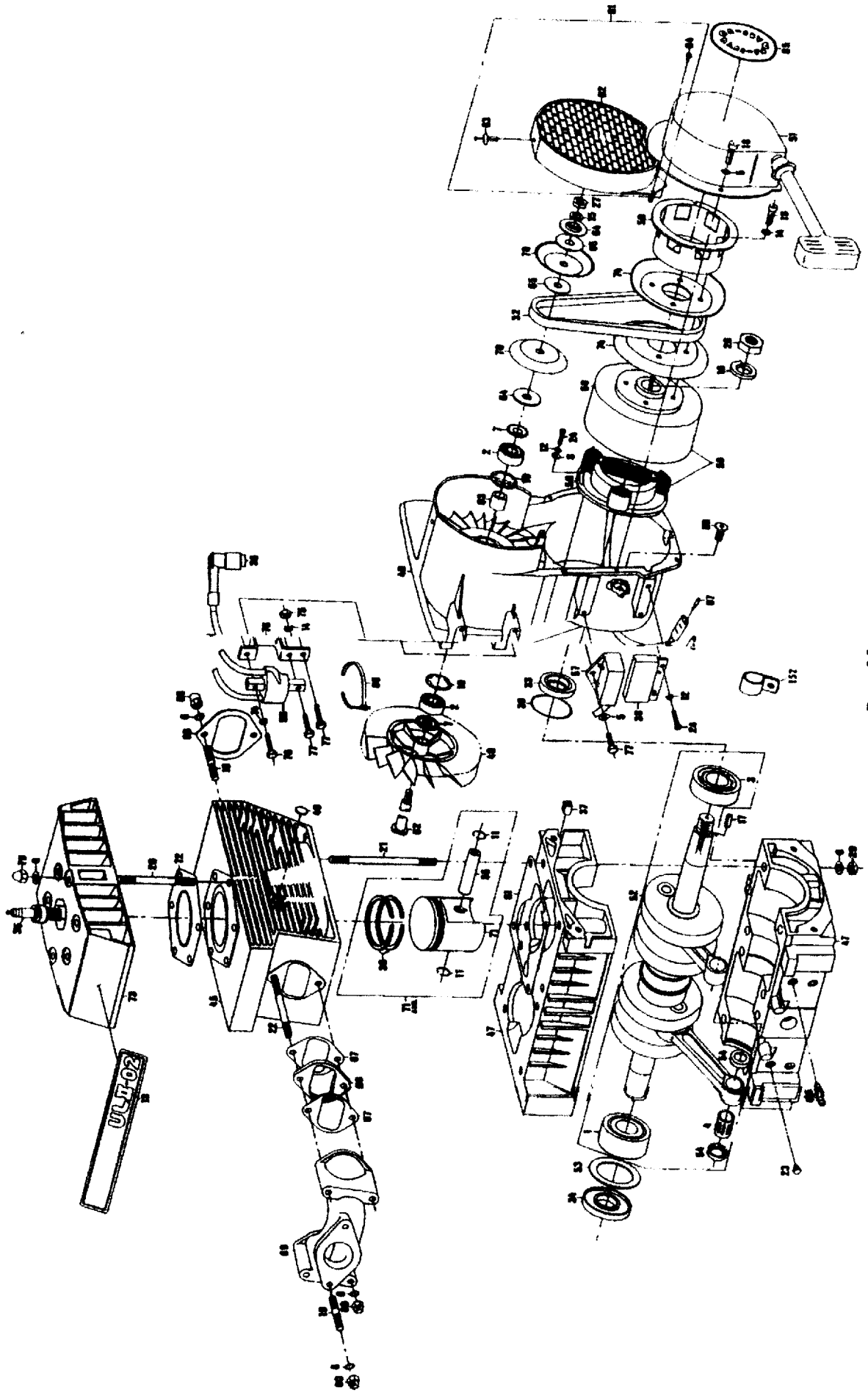
ROTAX B GEAR BOX

ROTAX B GEAR BOX WITH 8 HOLE PROVISION

No	Part No	Description	No	Part No	Description
1	810-107	Gear Housing	20	958-770	Dog Hub
2	932-091	Ball Bearing	21	944-469	Thrust Washer
3	850-430	O-Ring	22	827-841	Angular Ring
4	841-306	Hex Collar Screw	23	827-862	Ring Half
5	929-670	Dowel 10x13	24	945-752	Lock Washer
6	930-536	Gasket	25	941-350	Hex Screw 8 x 125
7	886-200	Gear Set 2.58	26	941-171	Hex Screw 8 X 110
8	827-786	Washer	27	841-301	Hex Screw 8 X 65
9	945-765	Lock Washer	28	552-280	Gasket Ring
10	841-656	Hex Screw	29	840-270	Magnetic Plug
11	910-372	Gear Cover	30	230-415	Gasket Ring
12	850-055	Oil Seal 30 x47 x 7	31	841-781	Cap Stan Screw
13	827-850	Distance Ring	32	941-115	Air Vent
14	932-820	Ball Bearing	33		Safety Wire
15	445-070	Snap Ring	34	827-830	Cover Washer
16		Propellar Shaft	35		Locktite (Violet)
17	944-470	Shim 25.5/34/.2	36		Locktite (Green)
18	847-620	Distance Ring	37		Locktite (Anti-Seize)
19	939-020	Disk Spring	38		BP Energrease



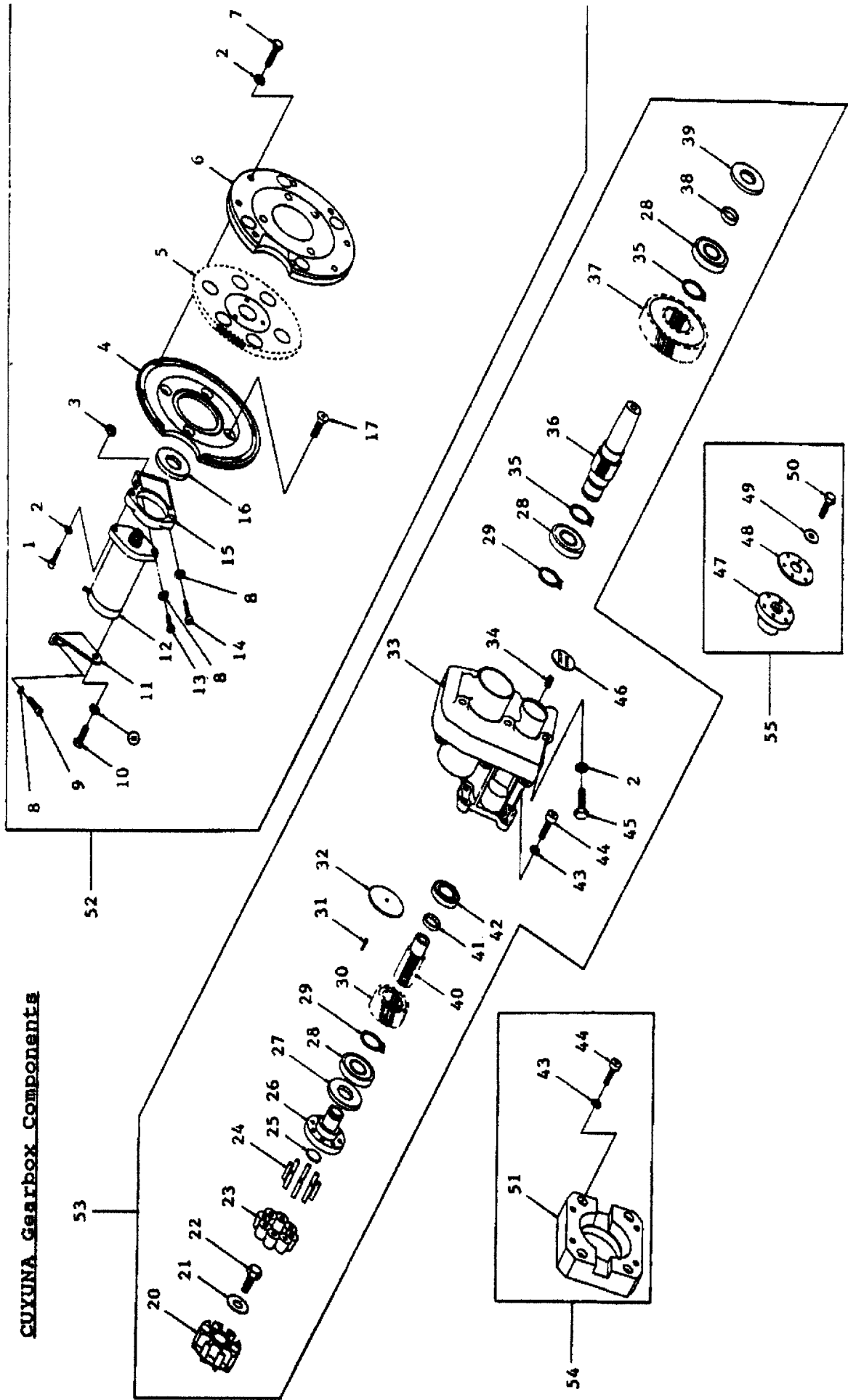
CUYUNA UL-11-02 Engine



CUYUNA UL-11-02 (Itemized Engine Parts Listing)

No	Part No	Description	No	Part No	Description
1	000-39-061-680	Ball Bearing	49	215-14-221-000	Rev-Flow Wheel Fan
2	000-39-071-130	Ball Bearing	50	215-14-228-000	Recoil NSI Carrier
3	000-39-075-230	Ball Bearing	51	215-41-822-000	Recoil NSI
4	39112K	Needle Bearing	52	215-86-901-000	Crankshaft ASM
5	000-40-422-060	Washer (Wavie B6 SS)	53	338-03-007-000	Thrust Washer
6	000-40-422-090	Washer (Wavie B8 SS)	54	338-03-013-000	Check Plate
7	000-40-477-350	Nilos Ring	55	338-05-002-000	Wrist Pin
8	000-40-510-060	Washer (Flat A5.3 ZP)	56	000-43-811-000	Ignition Coil (Twin) KD
9	000-40-510-090	Washer (Flat A8.4 ZP)	56	000-43-209-000	Ignition Coil (Twin) ND
9	000-40-510-110	Washer (Flat A8.4 SS)	56	000-43-816-000	Ignition Coil (Single) KD
9	000-40-510-100	Washer (Flat A10.5 ZP)	56	000-43-210-000	Ignition Coil (Single) ND
10	000-40-614-320	Locking Ring	57	000-43-808-000	CDI Amplifier KD
11	000-40-621-420	Cirdip	57	000-43-201-000	CDI Amplifier ND
12	000-40-644-050	Washer (Splitlock B5 SS)	58	000-43-815-000	Magneto ASM, (CDI KD)
13	002-51-004-000	Decal (UL 11-02)	58	000-43-203-000	Magneto ASM, (CDI ND)
14	000-40-644-060	Washer (Splitlock B6 SS)	59	000-43-806-000	Stator ASM, (CDI KD)
15	000-40-644-100	Washer (Splitlock B10 SS)	59	000-43-205-000	Stator ASM, (CDI ND)
16	000-40-645-200	Washer (Splitlock B20 ZP)	60	000-43-813-000	Flywheel ASM (CDI KD)
17	000-40-896-150	Key, Flywheel	60	000-43-204-000	Flywheel ASM (CDI ND)
18	000-41-650-060	SHCS (M6x16 SS)	61	338-07-008-020	Base Gasket
19	000-41-272-080	Stud, (M8x20 SS)	62	338-14-007-020	Shaft
20	000-41-273-080	Stud, Head (M8x95 SS)	63	338-14-008-000	Spacer
20	000-41-242-850	Stud, Head (M10x75 ZP)	64	338-14-009-000	Clamping Washer
20	000-41-274-080	Stud, Head (M8x108 SS)	65	338-14-012-000	Spacer
21	000-41-275-080	Stud, Base (M8x114 SS)	66	399-07-008-000	Exhaust Gasket
22	000-41-276-080	Stud, Intake (M8x76 SS)	67	215-07-011-000	Intake Gasket UL-11-02
23	000-41-470-000	Plug, Crankcase	68	215-07-012-000	Insulator Block UL-11-02
24	000-41-501-160	Screw, Filister Head ZP	69	430-07-841-000	Intake Manifold UL-11-02
24	000-41-501-050	SHCS (M8x30)	70	399-14-002-000	Pulley, (Top Half)
25	000-41-613-080	SHCS (M8x30 SS)	71	438-05-818-000	Piston (Standard)
26	000-41-641-080	SHCS (M8x45)	71	438-05-819-000	Piston (Oversized .5mm)
27	000-41-952-020	Nut, Hex (M10 ZP)	71	2114	Piston (After Market)
28	000-41-955-070	Nut, Hex (M20 ZP)	72	438-07-014-000	Head Gasket
29	000-41-970-100	Nut, Hex (M8 ZP)	73	438-07-016-000	Head, Flow Through
29	000-41-970-110	Nut, Hex (M10 ZP)	73	438-07-015-000	Head Standard
29	000-41-971-080	Nut, Hex (M8 SS)	74	215-14-223-000	Pulley, (Half) NSI
30	2214	Ring Set, Piston Standard	75	000-41-972-060	Hex Nut 6M SS
32	000-42-175-070	V-Belt	76	000-41-596-060	HHCS M6X25 SS
33	2516	Oil Seal (MAG)	77	000-41-594-060	HHCS M6X20 SS
34	2517E	Oil Seal (PTO- E/S)	78	002-44-153-000	Coil Mount Bracket SS
34	2517P	Oil Seal (PTO- P/S)	79	000-41-605-080	Acorn Nut (Closed End)
35	1147-1	Spark Plug, NGK B8ES	80	000-41-606-080	Acorn Nut (Open End)
35	002-44-201-000	Spark Plug, RN3C	81	215-31-905-000	Fan Guard Kit (Standard)
36	002-44-443-000	Connector CDI	82	215-14-405-000	Fan Guard (Standard)
37	002-44-450-010	Grommet	83	002-43-001-000	Ny-Drive
38	000-43-450-000	Regulator Rectifier LR 21	84	000-45-203-000	Screw #6 X 1/2
39	002-52-666-000	O Ring	85	002-51-005-000	Recoil Decal
40	215-14-937-000	CDI Fan Housing ASM RR ND	86	000-43-413-000	Wire Tie
40	215-14-938-000	CDI Fan Housing ASM RF ND	87	002-44-533-000	Push on Terminal (Male)
40	215-14-939-000	CDI Fan Housing ASM RR KD	89	000-41-616-080	Flat Head Screw (CDI KD)
40	215-14-940-000	CDI Fan Housing ASM RF KD	89	002-43-003-000	Flat Head Screw (CDI ND)
41	215-07-217-000	Carburetor Adapter	90	002-44-141-000	Grounding Bar
42	215-07-220-000	Gasket Adapter	91	002-44-129-000	Retainer Wire
43	215-07-218-000	Carburetor Adapter	92	291-11-801-000	Ring Gear E/S
44	215-07-219-000	Gasket Adapter	93	338-11-011-000	Front Bracket E/S
45	430-07-831-000	Cylinder ASM, UL-11-02	94	000-42-319-450	Oil Seal E/S
45	215CS	Cylinder Sleeve	95	000-41-651-060	SHCS M6X14 SS E/S
46	291-01-0001-000	Impulse Nipple	96	000-41-652-060	SHCS M6X20 SS E/S
47	291-01-810-000	Crank Case UL-11-02 RR Option	97	000-41-653-080	SHCS M8X30 SS E/S
48	291-07-401-000	Welch Plug	98	000-40-644-080	Splitlock Washer M8 SS
49	291-14-003-000	Standard Wheel Fan	99	002-53-033-000	Starter Motor E/S

CUYUNA UL-11-02 Gearbox Components



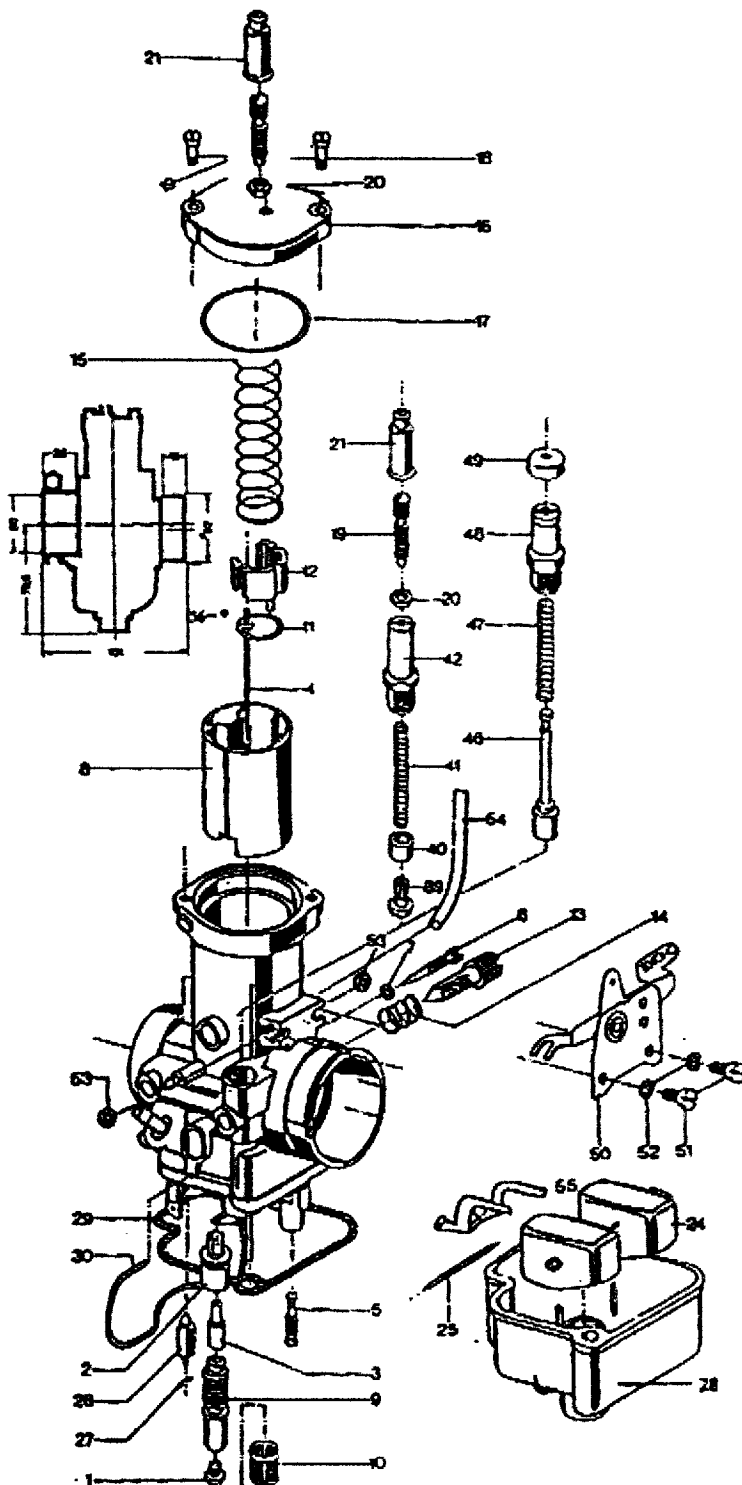
CUYUNA UL-11-02 Gearbox Components Parts Listing

No	Part No	Description	No	Part No	Description
1	000-41-653-080	Socket Head Cap Screw	29	000-40-615-000	Retaining Ring
2	000-40-644-080	Washer, SL	30	700-02-001-024	Pinion
3	000-41-971-080	Hex Nut	31	002-42-177-000	Duck Bill Vent
4	700-01-003-000	Electric Starter Adapter	32	002-42-180-000	Expansion Plug
5	291-11-801-000	Ring Gear	33	700-01-001-000	Gearcase Assembly
6	700-01-004-000	Electric Starter Housing	34	000-41-482-000	Oil Plug
7	000-41-593-080	Hex Head Cap Screw	35	000-40-616-000	Retaining Ring
8	000-40-644-060	Washer, SL	36	700-02-004-000	Output Shaft
9	000-41-650-060	Socket Head Cap Screw	37	700-02-002-049	Gear 49T
10	000-41-655-080	Hex Head Cap Screw	38	700-02-006-000	Sleeve
11	002-53-034-000	Bracket	39	000-42-321-000	Oil Seal
12	002-53-033-000	Starter Motor	40	700-02-003-000	Input Shaft
13	000-41-655-060	Socket Head Cap Screw	41	700-02-007-000	Pinion Spacer
14	000-41-652-060	Socket Head Cap Screw	42	000-39-077-000	Ball Bearing
15	338-11-011-000	Bracket	43	000-40-653-000	Washer, SL
16	000-42-319-415	Oil Seal	44	000-41-654-010	Socket Head Cap Screw SS
17	000-41-657-100	Socket Flat Head Cap Screw	44	000-41-648-010	Socket Head Cap Screw ZP
18	002-53-035-000	Solenoid	45	000-41-741-290	Hex Head Cap Screw
19	000-43-221-000	Regulator Rectifier	46	700-03-002-000	Data Plate
20	700-01-002-000	Hub Drive	47	700-02-008-000	Prop Hub
21	000-46-213-000	Flat Washer	48	700-03-003-000	Prop Hub Bolt Flange
22	000-45-225-000	Hex Head Cap Screw	49	000-40-607-000	Conical Washer
23	700-03-001-000	Isolator	50	000-45-230-000	Capscrew
24	000-45-228-000	Spirol Pin	51	700-01-005-000	Gearbox Adapter
25	002-42-179-000	Expansion Plug	52	701-00-001-000	Electric Starter Kit
26	700-02-005-000	Drive Coupler	53	700-00-001-204	Gearbox Assembly
27	000-42-322-000	Oil Seal	54	701-00-002-000	Adapter Kit
28	000-39-075-230	Ball Bearing	55	701-00-003-000	Prop Hub Kit

BING 54 Carburetor

BING CARBURETOR

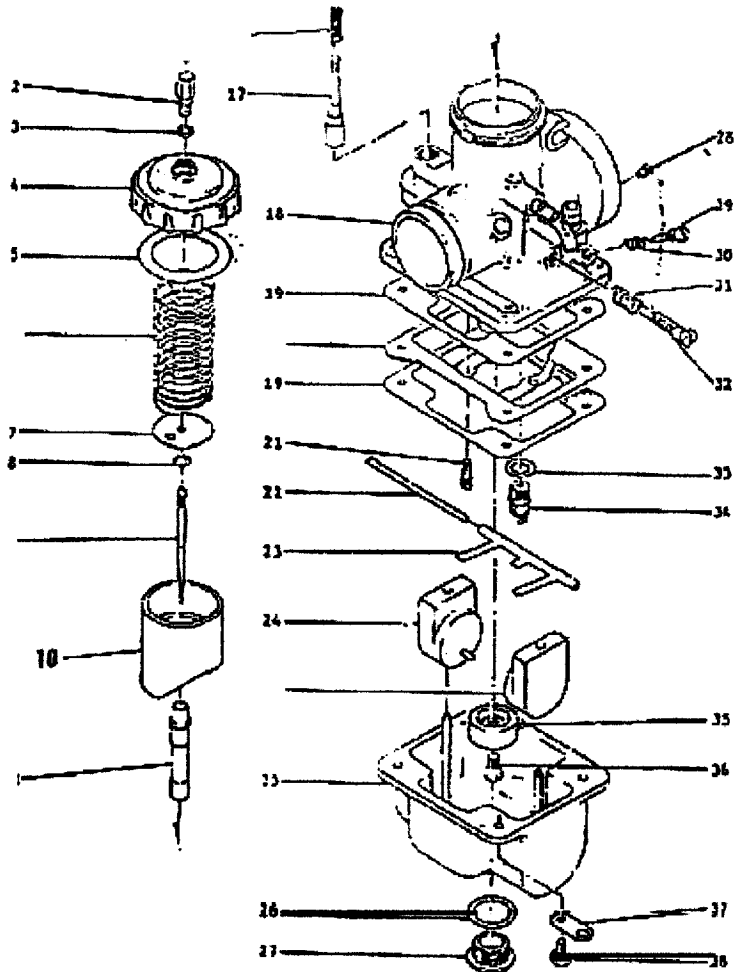
No	Part No.	Description
1	B5401	Main Jet (Specify 125-195)
3	B5403	Needle Jet (Specify 2.68-2.82)
4	B5404	Jet Needle (Specify 2H2- 15K2)
5	B5405	Idler Jet (Specify 30-65)
6	B5406	Air Screw
7	B5407	O Ring
8	B5408	Carb Piston
9	B5409	Mixing Tube
10	B5410	Sieve Sleeve
11	B5411	Needle Clip
12	B5412	Spring Clip
13	B5413	Adjustment Screw
14	B5414	Spring
15	B5415	Piston Spring
16	B5416	Cover Plate
17	B5417	Rubber Ring
18	B5418	Screw 5 x 12
19	B5419	Screw 6 x 0.75
20	B5420	Nut 6 x 0.75
21	B5421	Grommet
24	B5424	Float
25	B5425	Pin
26	B5426	Valve with Viton Tip
27	B5427	Needle Clip
28	B5428	Float Chamber
29	B5429	Gasket
30	B5430	Spring Clip
39	B5439	Starting Piston
40	B5440	Sleeve
41	B5441	Spring
42	B5442	Choke Housing
46	B5446	Choke Piston
47	B5447	Compression Spring
48	B5448	Choke Housing
49	B5449	Rubber Cap
50	B5450	Choke Lever
51	B5451	Screw 5 X 10
52	B5452	Lockwasher
53	B5453	Nut 5mm
54	B5454	Vent Line 120mm
55	B5455	Float Bracket
A	B54HA	Remote Choke Kit
B	B54HB	Manual Choke Kit
	B54RB	Rebuild Kit
	B54CC	Bing 54 Complete Carb.



MIKUNI VM34 Carburetor

MIKUNI

No	Part No.	Description
1	6701	Rubber Cap
2	6702	Cable Adjuster
3	6703	Locknut (Cable Adjuster)
4	6704	Mixing Chamber Cap
5	6705	Gasket (Mixing Chamber)
6	6706	Spring (Throttle Valve)
7	6707	Plate (Spring Seat)
8	6708	E Clip (Needle Positioning)
9	6709	Needle
10	6710	Throttle Valve (Slide)
11	6711	Needle Jet
12	6712	Rubber Cap (Starter Plunger)
13	6713	Fitting (Starter Plunger)
14	6714	Lever (Starter)
15	6715	Spring Plate (Starter Lever)
16	6716	Spring (Starter Plunger)
17	6717	Plunger (Starter)
18	6718	Body (Mixing Chamber)
19	6719	Gasket (Float Bowl)
20	N/A	Baffle Plate (Float Bowl)
21	6721	Pilot Jet
22	6722	Pin (Float Arm Hinge)
23	6723	Arm (Float)
24	6724	Float
25	6725	Bowl (Float)
26	6726	Washer (Main Jet)
27	6727	Plug (Main Jet)
28	6728	Air Jet
29	6729	Air Adjusting Screw
30	6730	Spring (Air Adjusting)
31	6731	Spring (Idle Adjusting Screw)
32	6732	Idle Adjusting Screw
33	6733	Washer (Needle Valve)
34	6734	Needle Valve & Seat Assy
35	6735	Ring (Main Jet)
36	6736	Main Jet
37	6737	Plate (Vent Tube Anchor)
38	6738	Screw (Float Bowl)
40	6750	Mikuni Carburetor
39	6750RB	Mikuni Rebuild Kit



After Market Engine Components

The After Market High Performance Pistons are engineered to provide the best possible path for the combustion chamber heat to transfer to the cylinder walls.

THE PISTON KITS INCLUDE: 1 PISTON, 2 RINGS, 1 WRIST PIN, AND 2 CIRCLIPS

All Pistons, rings, wrist pins, and circlips are manufactured to Original Equipment Manufacturer Specifications.

All individual components will interchange with original parts. All Rotax Pistons are standard size, oversized pistons are available in 1st over = 72 mm 2nd over = 72 ½ mm, or 4th over 74 mm.

Cuyuna After Market Pistons Are Available in Standard = 67.5 mm, 1st Over = 68 mm and 2nd Over = 68 ½ mm

PISTONS

Part No. Description

2108	Rotax 277 After Market Piston Kit
2109	Rotax 377 After Market Piston Kit
2110	Rotax 447 After Market Piston Kit
2108	Rotax 503 After Market Piston Kit
2108	Rotax 532/ 521 cc After Market Piston Kit
2112	Rotax 582 After Market Piston Kit
2113	Rotax 618 After Market Piston Kit
2114	Cuyuna UL-11-02 After Market Piston Kit
2115	Cuyuna 430HP After Market Piston Kit

RING SETS

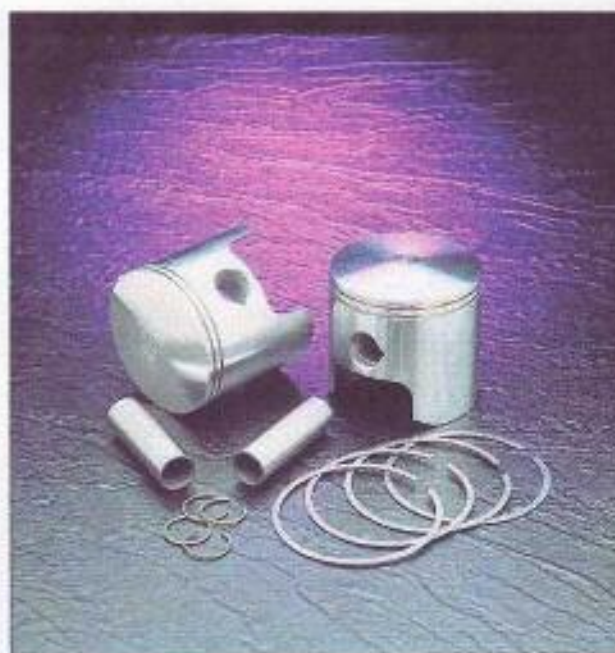
Part No. Description

2208	Rotax 277 After Market Ring Set
2209	Rotax 377 After Market Ring Set
2210	Rotax 447 After Market Ring Set
2208	Rotax 503 After Market Ring Set
2208	Rotax 532/ 521 cc After Market Ring Set
2212	Rotax 582 After Market Ring Set
2213	Rotax 618 After Market Ring Set
2214	Cuyuna UL-11-02 After Market Ring Set
2215	Cuyuna 430HP After Market Ring Set

WRIST PINS

Part No. Description

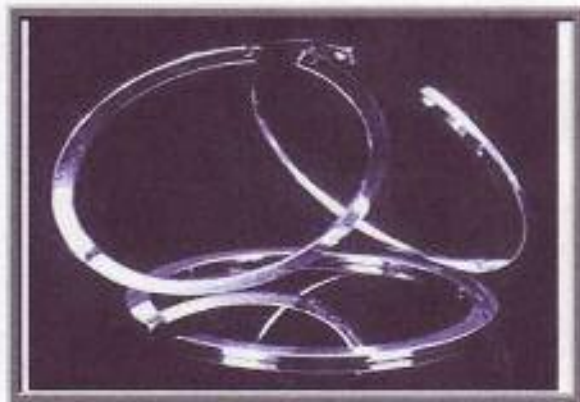
2308	Rotax 277 After Market Wrist Pin
2309	Rotax 377 After Market Wrist Pin
2310	Rotax 447 After Market Wrist Pin
2308	Rotax 503 After Market Wrist Pin
2308	Rotax 532/ 521 cc After Market Wrist Pin
2312	Rotax 582 After Market Wrist Pin
2313	Rotax 618 After Market Wrist Pin
2314	Cuyuna UL-11-02 After Market Wrist Pin
2315	Cuyuna 430HP After Market Wrist Pin



After Market Engine Components

CIRCLIPS

Part No.	Description
2408	Rotax 277 Circlip
2409	Rotax 377 Circlip
2410	Rotax 447 Circlip
2408	Rotax 503 Circlip
2408	Rotax 532/521 cc Circlip
2414	Cuyuna UL-11-02 Circlip
2415	Cuyuna 430HP Circlip



NEEDLE CAGE BEARINGS

Part No.	Description
2027	Rotax 277 Needle Cage Bearing
2027	Rotax 377 Needle Cage Bearing
2027	Rotax 447 Needle Cage Bearing
2027	Rotax 503 Needle Cage Bearing
2027	Rotax 532/521 cc Needle Cage Bearing
2026	Cuyuna UL-11-02 Needle Cage Bearing
2026	Cuyuna 430HP Needle Cage Bearing

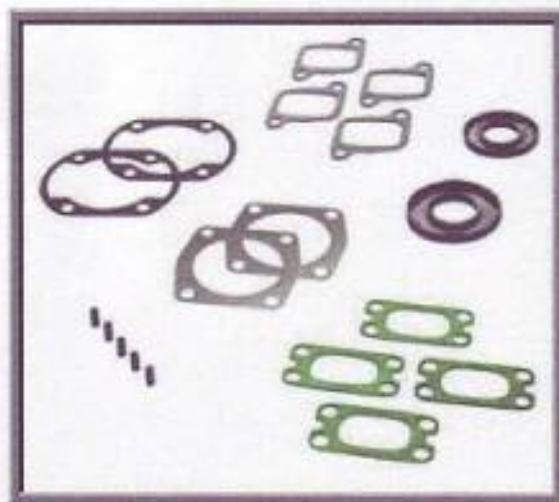


Gasket Sets

Part No.	Description
2508	Rotax 277 Full Gasket Set With Oil Seals
2509	Rotax 377 Full Gasket Set With Oil Seals
2510	Rotax 447 Full Gasket Set With Oil Seals
2511	Rotax 503 Full Gasket Set With Oil Seals
2512	Rotax 521 cc Full Gasket Set With Oil Seals
2513	Rotax 582 Full Gasket Set With Oil Seals
2514	Rotax 618 Full Gasket Set With Oil Seals
2515	Cuyuna UL-11-02 Full Gasket Set
2516	Cuyuna 430HP Full Gasket Set

Top Gasket Sets

Part No.	Description
2608	Rotax 277 Top Gasket Set
2609	Rotax 377 Top Gasket Set
2610	Rotax 447 Top Gasket Set
2611	Rotax 503 Top Gasket Set
2612	Rotax 521 cc Top Gasket Set
2613	Rotax 582 Top Gasket Set
2614	Rotax 618 Top Gasket Set



After Market Air Filters



AFTER MARKET AIR FILTERS & ACCESSORIES

Part No.	Description
3920-F	Single Carb Universal Air Filter (Cuyuna & Rotax)
8526-AS	Single Carb, Universal Air Filter Assembly (Cuyuna & Rotax)
8527-AS	Dual Carb, Universal Air Filter Assembly (Cuyuna & Rotax)
8528-F	Dual Carb, Oval Air Filter (Rotax 503)
8529-F	Dual Carb, Oval Air Filter (Rotax 460,532, 580, 582 & 618)
8530-F	2 Single Carb, JR-50 Air Filters (fits Mikuni's for Cuyuna 430 HP)
JR-50	Single Carb, After Market fo Mikuni Air Filter (Cuyuna UL-11-02)
JR-60	Single Carb, After Market for Bing 54 Air Filter (Rotax)
AFC-1	Air Filter Cover for Single Carb Air Filter
AFC-2	Air Filter Cover for Dual Carb Air Filter
FC-101	Air Filter Cleaner





Part No.	Description
FUE1	Mikuni Single Fuel Pump
FUE1-RB	Mikuni Single Fuel Pump Rebuild Kit
FUE2	Mikuni Double Fuel Pump
FUE2-RB	Mikuni Double Fuel Pump Rebuild Kit



STARTER KITS

Part No.	Description
03-001	GPL Basic Electric Starter Kit for Rotax 337,447 & 503 Fan Cooled Engines
03-002	GPL Deluxe Electric Starter Kit For Rotax 337,447 & 503 Fan Cooled Engines
03-003	GPL Basic Electric Starter Kit for Rotax 532, 582 & 618 Liquid Cooled Engines
03-004	GPL Deluxe Electric Starter Kit For Rotax 532, 582 & 618 Liquid Cooled Engines

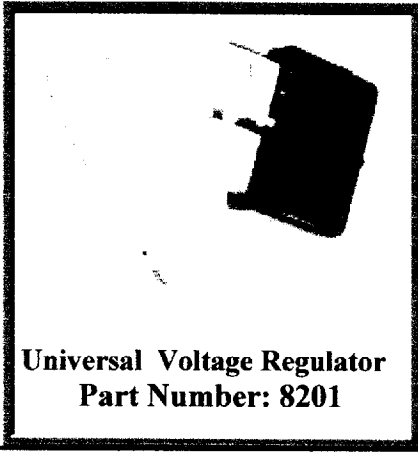


GPL Basic Starter Kit

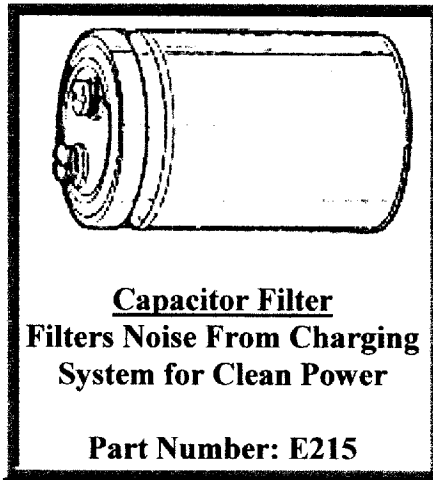


GPL Deluxe Starter Kit

After Market Engine Components

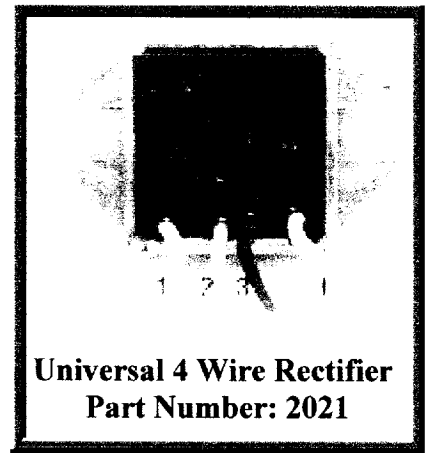


**Universal Voltage Regulator
Part Number: 8201**



**Capacitor Filter
Filters Noise From Charging
System for Clean Power**

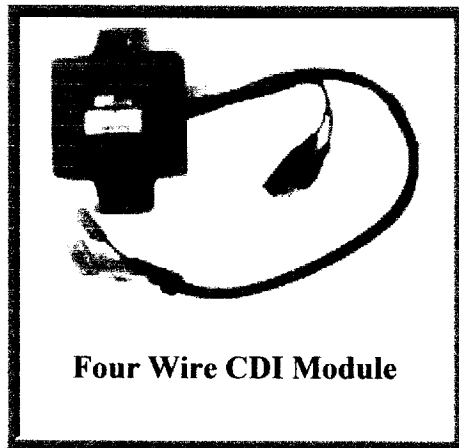
Part Number: E215



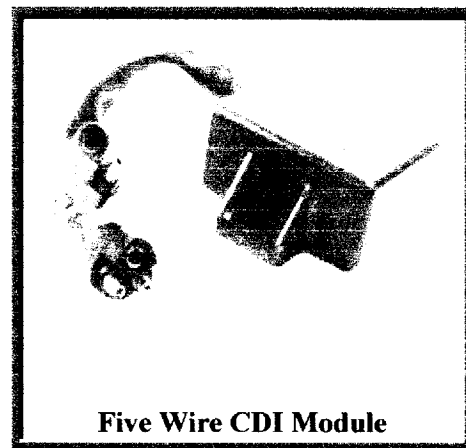
**Universal 4 Wire Rectifier
Part Number: 2021**

CDI UNITS

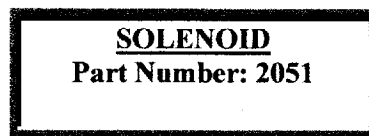
<u>Part No.</u>	<u>Description</u>
8200-4	Rotax After Market CDI Unit (4-Wire)
8200-5	Rotax After Market CDI Unit (5-Wire)
8200-7	Cuyuna After Market CDI Unit (7-Wire)
8200-8	Cuyuna After Market CDI Unit (8-Wire)
8200-NC	Cuyuna UL-11-02 Nippondenso CDI Unit
8200-NR	Rotax 277 Nippondenso CDI Unit
8200-KC	Cuyuna UL-11-02 Kukason CDI Unit



Four Wire CDI Module



Five Wire CDI Module

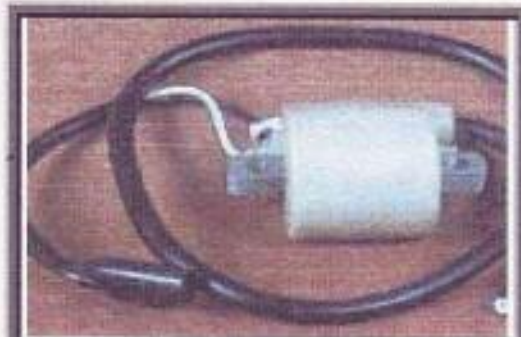


**SOLENOID
Part Number: 2051**

After Market Engine Components

IGNITION COILS

Part No.	Description
8202-R1	Rotax 277 After Market Single Ignition Coil
8202-R2	Rotax 503 After Market Dual Ignition Coil
8202-UN	Rotax & Cuyuna Nippondenso Universal Ignition Coil
8202-C1	Cuyuna UL-11-02 Single Ignition Coil



**Single Ignition Coil
(Rotax 277)**



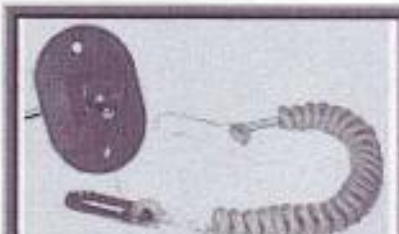
**Dual Ignition Coil
(Rotax 503)**

IGNITION SWITCHES & KILL SWITCHES

Part No.	Description
8000	Single Ignition Kill Switch
8001	Dual Ignition Kill Switch
8002	Tether/Lanyard Only
E2-01	Single Ignition Switch
E2-02	Dual Ignition Switch



**Single Ignition Kill Switch
Part Number: 8000**



**Dual Ignition Kill Switch
Part Number: 8001**



**Single Ignition Switch
Part Number: E2-01**



**Dual Ignition Switch
Part Number: E2-02**



**Magneto Ignition Switch
Part Number: E2-03**

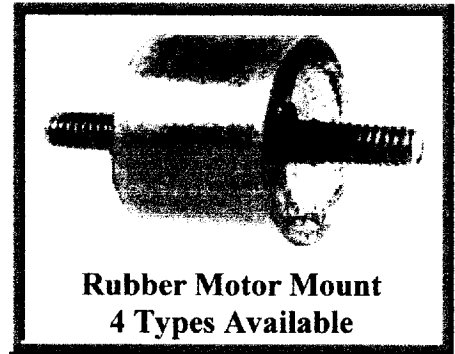


**Tether Only
Part Number: 8002**

After Market Engine Components

MOTOR MOUNTS

Part No.	Description
2002-1	Male / Male 3/8" Rubber Mount
2002-2	Male / Male 5/16" Rubber Mount
2003-1	Male / Female 3/8" Rubber Mount
2003-2	Male / Female 5/16" Rubber Mount

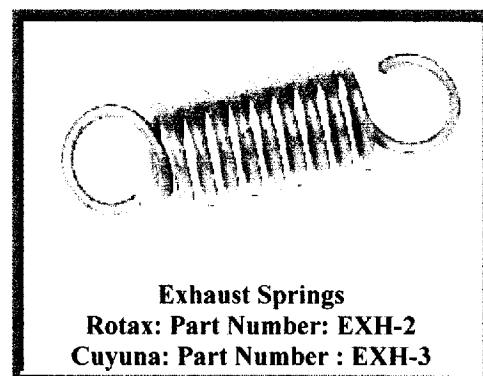
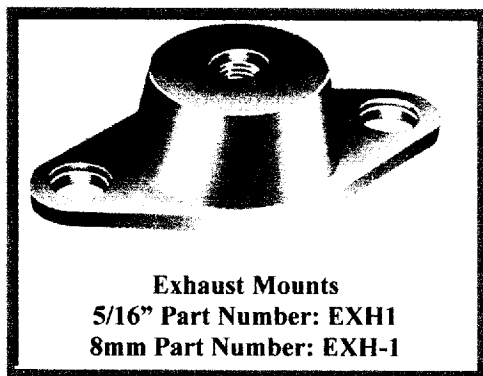


THERMO-TEC EXHAUST WRAP

Part No.	Description
EXHW-6	Exhaust Wrap (Per Foot)
EXHW-7	Exhaust Wrap (Per Roll)



Thermo-Tec. Exhaust Insulating Wrap is an innovative way to create more horsepower and reduce under-hood temperatures. Wrapping headers maintains hotter exhaust gases that exit the system faster through decreased density. Increased exhaust scavenging is produced, along with lower intake temperatures. Exhaust Insulating Wrap withstands continuous heat up to 2000°F, and contains no asbestos. Thermo-Tec exhaust wrap will not over-insulate a system when properly installed due to a proprietary coating developed by Thermo-Tec - Thermal Conduction Technology (TCT) - that conducts heat across the wrap's surface. This coating controls heat build-up and dissipation.



After Market Engine Components



**Rotax 277 Carb Flange
(Clamps Not Included)
Part Number: 8501 \$7.00**



**Cuyuna Carburetor Flange
(Clamps Not Included)
Part Number: 8500 \$15.00**



**Rotax 503 Carb Flange
(Clamps Not Included)
Part Number: 8502 \$7.95**

CARBURETOR FLANGES

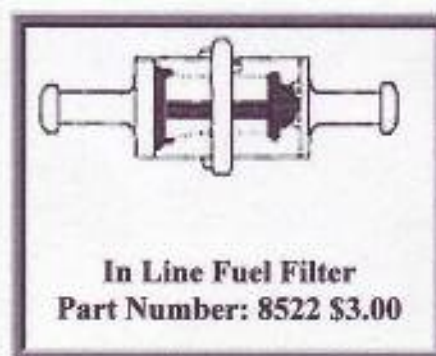
Part No.	Description
8500	Cuyuna After Market Carburetor Flange
8501	Rotax 277 After Market Carburetor Flange
8502	Rotax 503 After Market Carburetor Flange
8503	Rotax 532 After Market Carburetor Flange
8504	Rotax 670 After Market Carburetor Flange



**Primer Plunger Kit
Part Number: 8520 \$19.95**



**Ultra Flow Primer Bulb
Part Number: 8521 \$8.50**



**In Line Fuel Filter
Part Number: 8522 \$3.00**



**1/4" X 1/8" Plastic "T" Fitting
Part Number: 8523 \$1.40**

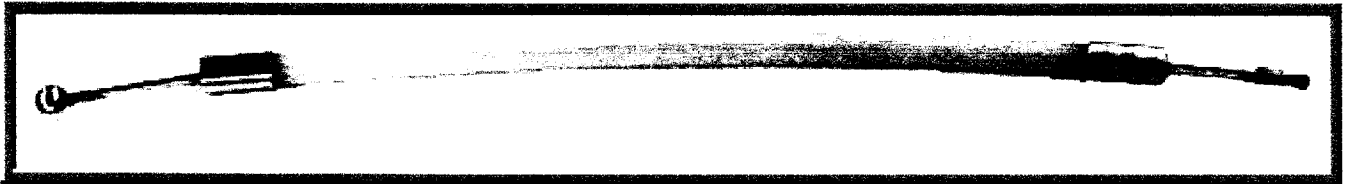


**1/8" ID Plastic "T" Fitting
Part Number: 8524 \$1.40**

After Market Throttle Components

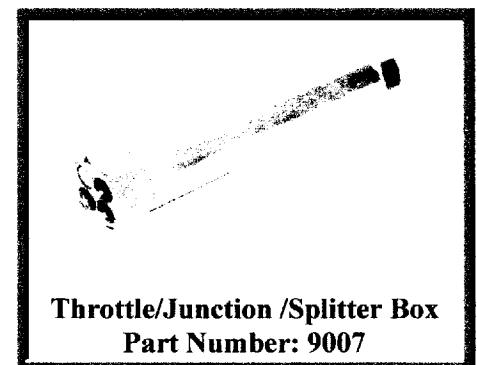
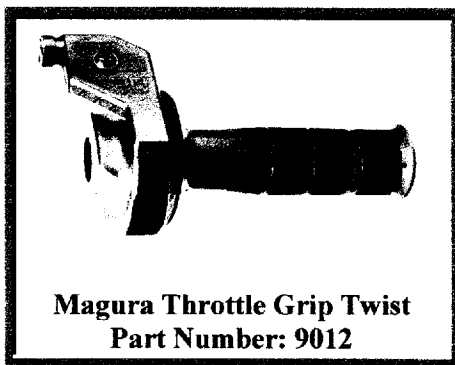
THROTTLE CABLES

Part No.	Description
9005	5' Foot Throttle Cable
9005-S	5' Foot Stainless Steel Throttle Cable
9009	12' Foot Throttle Cable
9009-S	12' Stainless Steel Throttle Cable
9009-12	12" Inch Throttle Cable
9009-12S	12" Inch Stainless Steel Throttle Cable
9009-13	13' Foot Throttle Cable
9009-13S	13' Foot Stainless Steel Throttle Cable
9009-15	15' Foot Throttle Cable
9009-15S	15' Foot Stainless Steel Throttle Cable
9009-17	17' Foot Throttle Cable
9009-17S	17' Foot Stainless Steel Throttle Cable
9009-18	18" Inch Throttle Cable

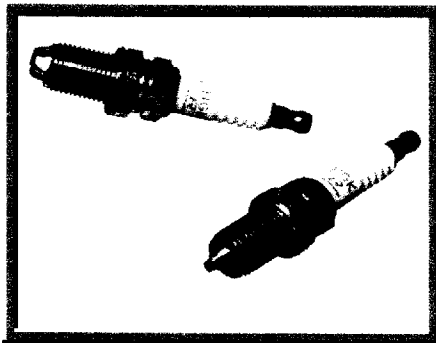


THROTTLE ACCESSORIES

Part No.	Description
9007	Throttle/Junction /Splitter Box
9012	Magura Throttle Grip Twist
9011L	Magura Handle Bar Grip

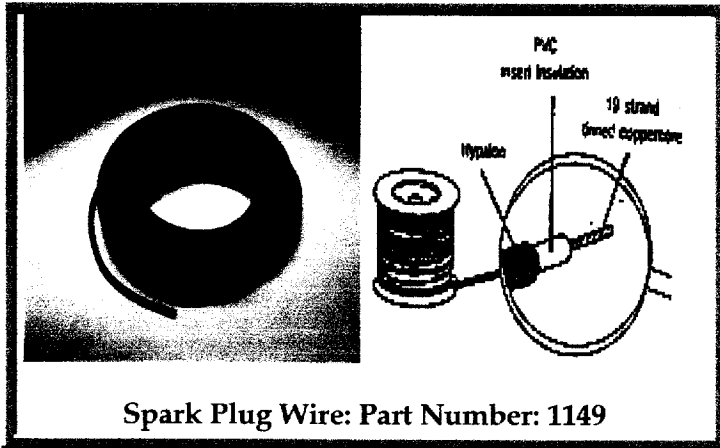


After Market Engine Components

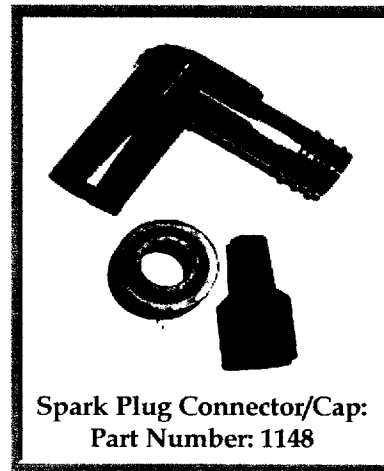


NGK SPARK PLUGS

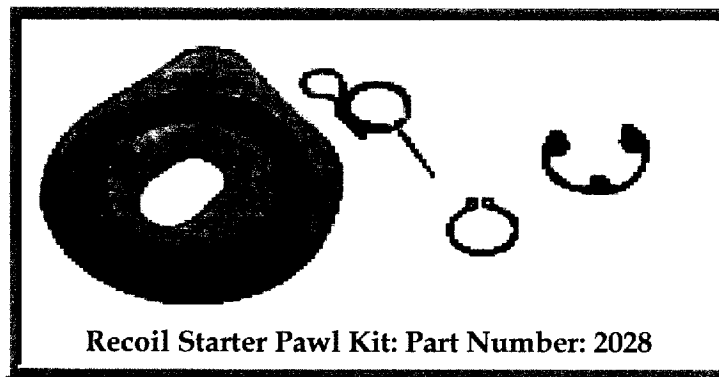
Part No.	Description
1147-1	NGK B8ES
1147-2	NGK B9ES
1147-3	NGK B10ES
1147-4	NGK CR8HSA
1147-5	NGK BR8ES
1147-6	NGK C6
1147-7	NGK BPR9EVX



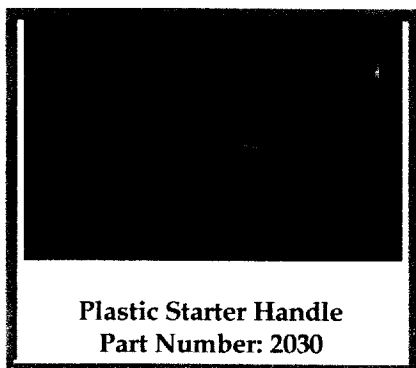
Spark Plug Wire: Part Number: 1149



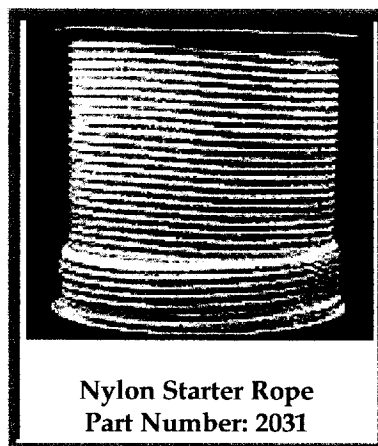
**Spark Plug Connector/Cap:
Part Number: 1148**



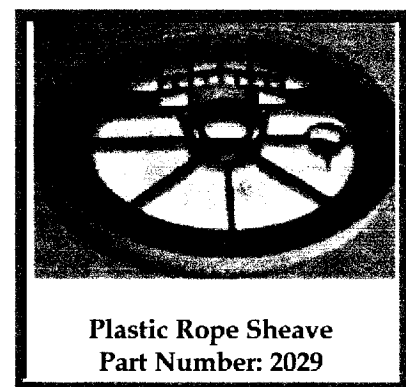
Recoil Starter Pawl Kit: Part Number: 2028



**Plastic Starter Handle
Part Number: 2030**

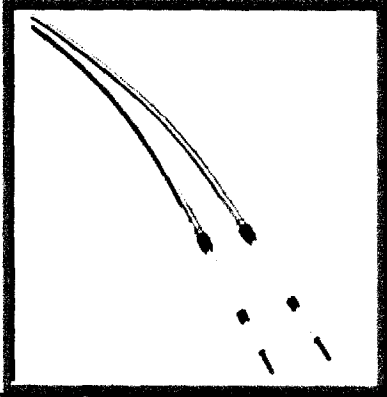


**Nylon Starter Rope
Part Number: 2031**



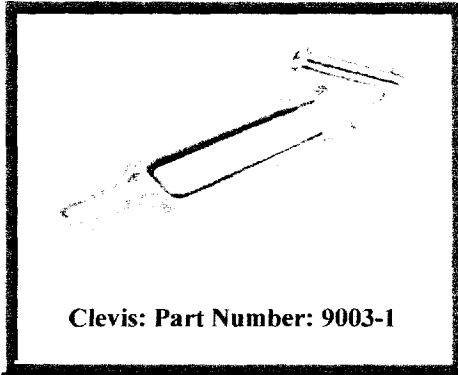
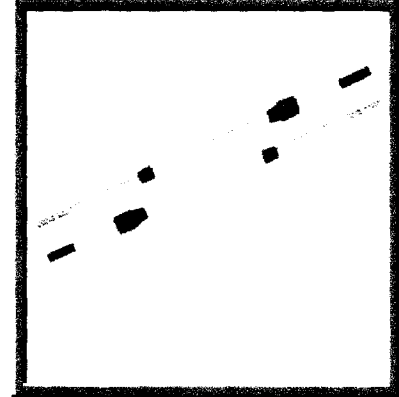
**Plastic Rope Sheave
Part Number: 2029**

After Market Engine Components

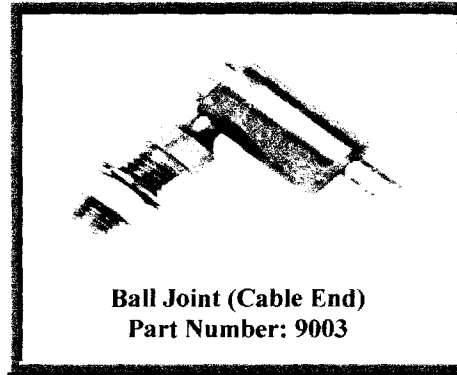


STEERING CABLES

Part No.	Description
9013-8	8' Ft Steering Cable
9013-11	11' Ft Steering Cable
9013-12	12' Ft Steering Cable
9013-13	13' Ft Steering Cable
9013-15	15' Ft Steering Cable
9013-17	17' Ft Steering Cable



Clevis: Part Number: 9003-1



**Ball Joint (Cable End)
Part Number: 9003**



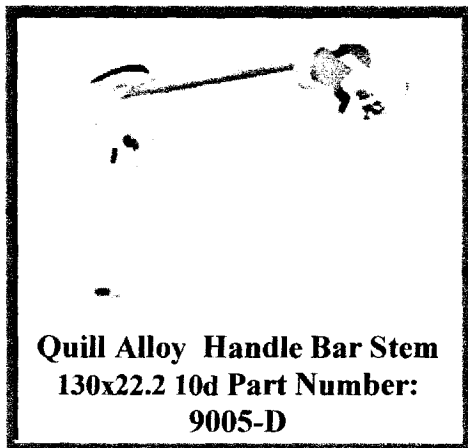
3" Rise Black Alloy Handlebars Part Number: 9005-A



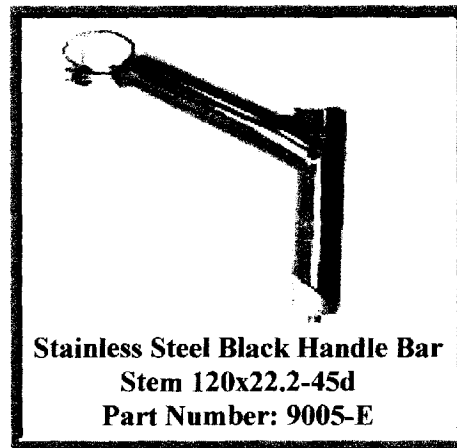
3" Rise Alloy Handlebars Part Number: 9005-B



5" Rise Alloy Handlebars Part Number: 9005-C



**Quill Alloy Handle Bar Stem
130x22.2 10d Part Number:
9005-D**



**Stainless Steel Black Handle Bar
Stem 120x22.2-45d
Part Number: 9005-E**

After Market Engine Components

Gauges



Davis Wind Wizard
Hand Held Wind Meter
Part Number: 1110



CHT Gauge
100° To 700° F 2" Round
Part Number: CHT-C101
Senders Not Included



Dual CHT Gauge
100° To 700° F 2" Round
Part Number: CHT-102
Senders Not Included



CHT Sender 10 mm
Part Number: CHT-S10
CHT Sender 14mm
Part Number: CHT-S14



Hour Meter
Part Number: HM-1



Tiny Tach, Self Powered
Part Number: T-101



Universal Tachometer 2"
Round Part Number: T-102



Hand Held Treysit
Mechanical Tach Part
Number: T103



Teleflex Blue Vector Series
3" Tach Part Number: T-104



Teleflex Blue Vector Series
2" Voltmeter 8-18 VDC
Part Number: VM-02



Falcon 2" Voltmeter 0-16 VDC
Part Number: VM-01

After Market Hubs, Blades and Fan Assemblies



9 Blade Hub
Part Number: 4020-H

With Bushings
Part Number: 4021-HW

Male & Female Available



12 Blade Hub
Part Number: 4025-H

Male & Female Available



Scat 1 Blade
4Z L Part Number: 4041L

Scat 2 Blade
4 Z R Part Number: 4041R



5Z L Part Number: 4050L
5 Z R Part Number: 4050R



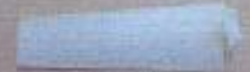
10 Blade Fixed Pitch Hub
Part Number: 4010-H



14 Blade Fixed Pitch Hub
Part Number: 4011-H



3ZL Blade
Part Number: 4075



3 HL PAG Blade
25° Part Number: 4100
30° Part Number: 4102
35° Part Number: 4103
40° Part Number: 4104



FAN ASSEMBLIES

9 Z Hub, With 4Z Blades
Part Number: 4200-A

9 Z Hub, With 5Z Blades
Part Number: 4201-A

12 Z Hub, With 4Z Blades
Part Number: 4202-A

12 Z Hub, With 5 Z Blades
Part Number: 4203-A



IVOPROPS

2 Blade Ivoprop Part Number: 4071

3 Blade Ivoprop Part Number: 4072

Spinner Cap, Part Number: 4073

Extra Color (Per Blade) Part Number: 4074

After Market Engine Components



2" Aluminum Upper Pulley
Part Number: 5016

2" Aluminum Lower Pulley Part
Number: 5013



1 1/2" Kevlar Belt
Part Number: 5021

Nylon Belts
(Different Sizes Available)
Call For Pricing



Drive Hub
Part Number: 5001



FIBERGLASS DUCTS

**Duct: 24 1/2" ID x 18" Deep
Part Number: 3000**

**Duct: 27" ID x 18" Deep
Part Number: 3007**

**Duct: 36" ID x 18" Deep
Part Number: 3011**

**Duct: 48" ID x 17" Deep
Part Number: 3009**

**Duct: 55" ID x 17" Deep
Part Number: 3010**



**Metal Clip With Rubber T Handle
Replacement for Saddle Clip
Part Number: 7004**

Engine Adapters

These units convert tapered engine
Shafts into 1 3/8" x 1 9/16 "or 2 3/8"
Specify 1 9/16" or 2 3/8"
Part Number: 5027

Hub Plate

Part Number: 4020-HP



We Stock 11 Gauge 2"
welded Mesh for Making
Your Own Guards.
Call For Available Sizes & Prices

Hovercraft Depot Skirt Sets



9 1/2 Foot Scat Hovercraft Skirt Sets
Scat 1& 2: Part Number: 6001
Additional Cost With Attachment Accessories
9 1/2 Foot Scat Hovercraft Floatation Skirt Sets:
Scat 1&2: Part Number: 6017



12 Foot Scat Hovercraft Skirt Sets:
Part Number: 6001-1
With Attachment Accessories
12 Foot Scat Hovercraft Floatation Skirt Set:
Part Number: 6018
12 Foot Scat Hovercraft Heavy Duty Skirt Set:
Part Number: 6015-H



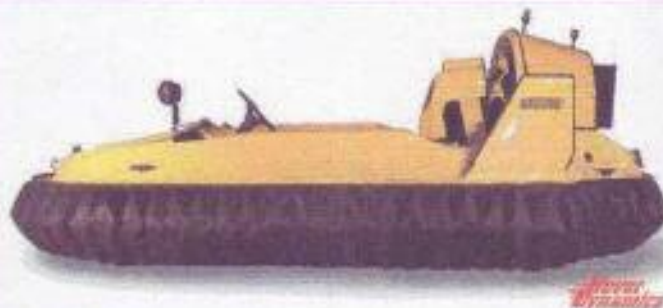
SA-1100 Skirt Set: Part Number: SA-102



Hoverstar Skirt Set: Part Number: 6201



Hoverjet GT Skirt Set: Part Number: 6200

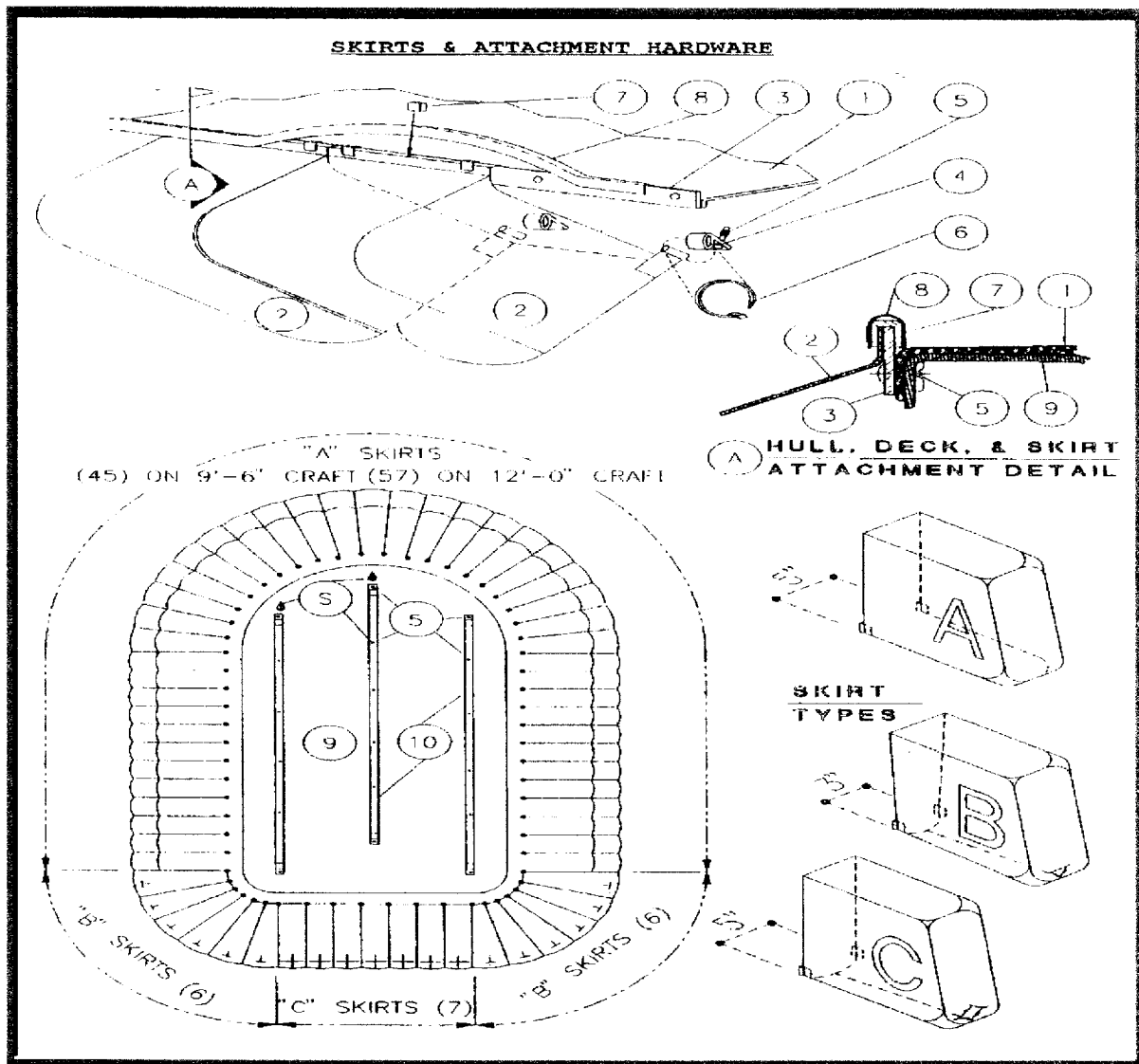


RX 2000 Hovercraft Skirt Set: Part Number: 6202
RX 2000 Floatation Skirt Set: Part Number: 6202-F

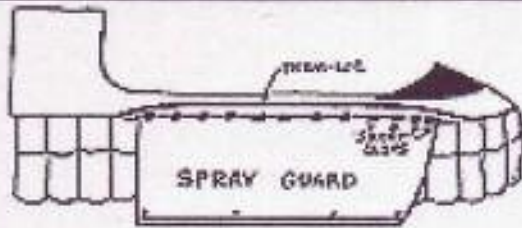
Hovercraft Depot Skirt Segments

SKIRT SEGMENTS & MATERIALS

Part No.	Description
6001-A	(A) Single Skirt Segment (Front & Side Sections)
6001-B	(B) Single Skirt Segment (Rear Corner Sections)
6001-C	(C) Single Skirt Segment (Main Rear Section)
6018-A	(A) Single Floatation Skirt Segment (Front & Side Sections)
6018-B	(B) Single Floatation Skirt Segment (Rear Corner Sections)
6018-C	(C) Single Floatation Skirt Segment (Main Rear Section)
6151-HA	(A) Single Heavy Duty Urethane Skirt Segment (Front & Side Sections)
6151-HB	(B) Single Heavy Duty Urethane Skirt Segment (Rear Corner Sections)
6151-HC	(C) Single Heavy Duty Urethane Skirt Segment (Main Rear Section)
6001-NM	Neoprene Material (Per Yard)
6001-UM	Urethane Material (Per Yard)



Miscellaneous Skirts & Skirt Accessories



Helps prevent Drivers and Passengers
From getting sprayed from the side of the Hovercraft

Spray Guard

Part Number: 6009

DRAG FLAP



To protect the wear on the back skirts with this
easy to attach drag flap. It's Made with Urethane
coated Nylon for Durability

Drag Flap Skirt

Part Number : 6012

ANTI-PLOW SKIRT:

To prevent your craft from Plowing in;
add 2 to 4 Anti Plow Skirts to the front of your Hovercraft

Anti Plow Skirt

Part Number : 6011

EDGE MOLDING

An Edge trim which holds skirts in place
when used with skirt clips

Edge Molding

Part Number : 6005

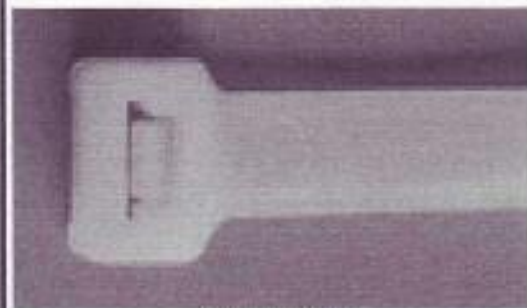


P-CLIPS

These P-Clips are for attaching the skirt ties to the Hull
of the Hovercraft

Stainless Steel P-Clips

Part Number: 6006-SS



SKIRT TIES

Nylon cable ties rated at 50 Pounds 6 3/4" Length

Skirt Ties

Part Number: 6003

SKIRT CLIPS

Skirt Clips are used in conjunction with
the edge molding to attach skirt segments

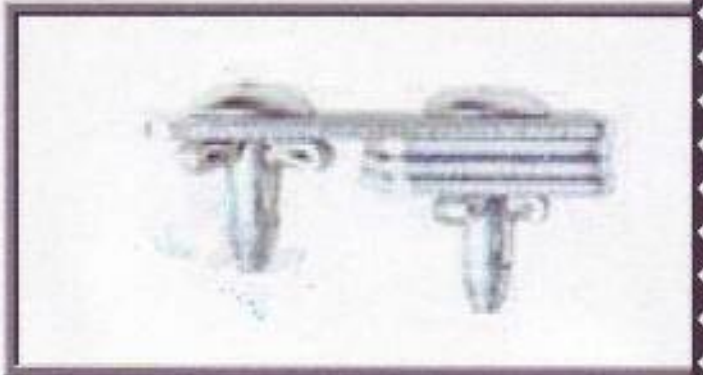
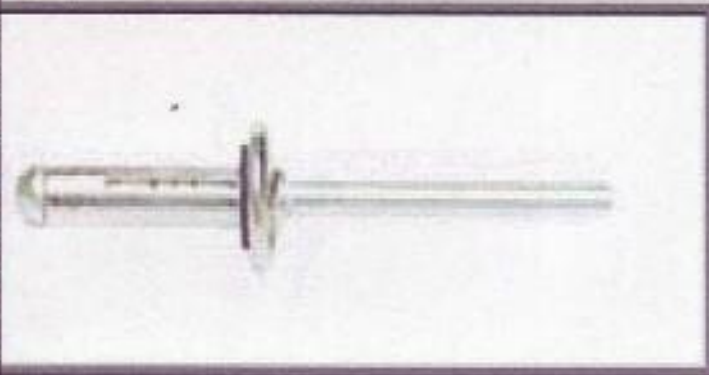
Skirt Clips

Part Number : 6004

Rivets & Wellnuts

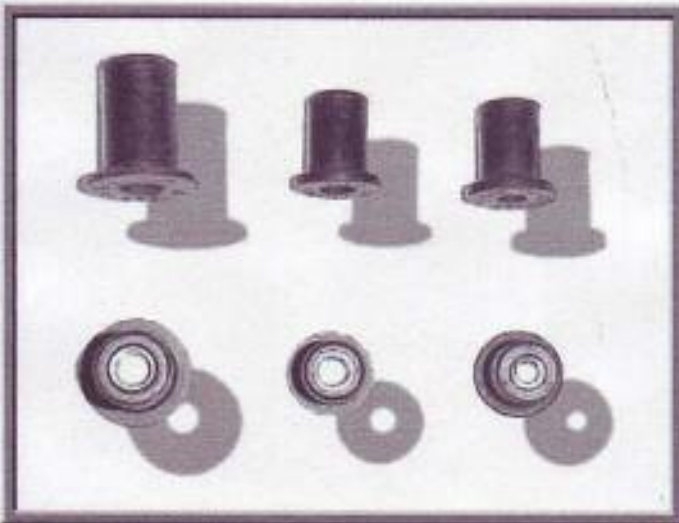
RIVETS

Part No.	Description
7707	1/8" x 1/2" Rivet
7708	1/4" x .40 TLR Rivet
7709	3/16 x 1/4" TLR Rivet
7710	3/16" x 3/8" Rivet
7711	3/16" x 1/2" TLR Rivet



WELLNUTS

Part No.	Description
3030	8-32 Wellnut
3031	10-32 (10-SL) Standard Long Wellnut
3032	10-32 (10-S) Standard Wellnut



SA-1100 Aero Cruiser; Miscellaneous Parts & Accessories

Aero Cruiser Accessories

<u>Part No.</u>	<u>Description</u>
SA-100	Skirt Set
SA-101	Gates 1600 8M50
SA-102	Gates 1600 8M85
SA-103	Aluminum Skid
SA-104	Skirt Slips
SA-105	Fan Assembly
SA-106	Muffler Assembly
SA-HC	Hovercover
SA-SP	Skirt Patching Kit

